

## Product datasheet for PH322666

### FSH beta (FSHB) (NM\_000510) Human Mass Spec Standard

#### Product data:

Product Type:	Mass Spec Standards
Description:	FSHB MS Standard C13 and N15-labeled recombinant protein (NP_000501)
Species:	Human
Expression Host:	HEK293
Expression cDNA Clone or AA Sequence:	RC222666
Predicted MW:	14.7 kDa
Protein Sequence:	>RC222666 protein sequence Red=Cloning site Green=Tags(s)  MKTLLQFFFLFCCWKAICCNSELTNITIAIEKEECRFCISINTTWCAGYCYTRDLVYKDPARPKIQKTCT FKELVYETVRVPGCAHHADSLYTPVATQCHCGKCDSSTDCTVRGLGPSYCSFGEMKE  TRTRPLEQKLISEEDLAANDILDYKDDDDKV
Tag:	C-Myc/DDK
Purity:	> 80% as determined by SDS-PAGE and Coomassie blue staining
Concentration:	>0.05 µg/µL as determined by microplate BCA method
Labeling Method:	Labeled with [U- 13C6, 15N4]-L-Arginine and [U- 13C6, 15N2]-L-Lysine
Buffer:	25 mM Tris-HCl, 100 mM glycine, pH 7.3
Storage:	Store at -80°C. Avoid repeated freeze-thaw cycles.
Stability:	Stable for 3 months from receipt of products under proper storage and handling conditions.
RefSeq:	<a href="#">NP_000501</a>
RefSeq Size:	1936
RefSeq ORF:	387
Synonyms:	HH24
Locus ID:	2488
UniProt ID:	<a href="#">P01225</a> , <a href="#">A0A0F7RQE8</a>
Cytogenetics:	11p14.1



[View online »](#)

**Summary:**

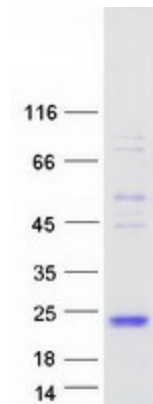
The pituitary glycoprotein hormone family includes follicle-stimulating hormone, luteinizing hormone, chorionic gonadotropin, and thyroid-stimulating hormone. All of these glycoproteins consist of an identical alpha subunit and a hormone-specific beta subunit. This gene encodes the beta subunit of follicle-stimulating hormone. In conjunction with luteinizing hormone, follicle-stimulating hormone induces egg and sperm production. Alternative splicing results in two transcript variants encoding the same protein. [provided by RefSeq, Jul 2008]

**Protein Families:**

Druggable Genome, Secreted Protein

**Protein Pathways:**

GnRH signaling pathway, Neuroactive ligand-receptor interaction

**Product images:**

Coomassie blue staining of purified FSHB protein (Cat# [TP322666]). The protein was produced from HEK293T cells transfected with FSHB cDNA clone (Cat# [RC222666]) using MegaTran 2.0 (Cat# [TT210002]).