

## Product datasheet for PH322527

### MSMP (NM\_001044264) Human Mass Spec Standard

#### Product data:

Product Type:	Mass Spec Standards
Description:	MSMP MS Standard C13 and N15-labeled recombinant protein (NP_001037729)
Species:	Human
Expression Host:	HEK293
Expression cDNA Clone or AA Sequence:	RC222527
Predicted MW:	14.99 kDa
Protein Sequence:	>RC222527 representing NM_001044264 Red=Cloning site Green=Tags(s)  MALRMLWAGQAKGILGGWGIICLVMSLLLQHPGVYSKCYFQAQAPCHYEGKYFTLGESWLRKDCFHCTCL HPVGVGCCDTSQHPIDFPAGCEVRQEAGTCQFSLVQKSDPRLPCKGGPDPEWGSANTPVGAPAPHSS  TRTRPLEQKLISEEDLAANDILDYKDDDDKV
Tag:	C-Myc/DDK
Purity:	> 80% as determined by SDS-PAGE and Coomassie blue staining
Concentration:	>0.05 µg/µL as determined by microplate BCA method
Labeling Method:	Labeled with [U- 13C6, 15N4]-L-Arginine and [U- 13C6, 15N2]-L-Lysine
Buffer:	25 mM Tris-HCl, 100 mM glycine, pH 7.3
Storage:	Store at -80°C. Avoid repeated freeze-thaw cycles.
Stability:	Stable for 3 months from receipt of products under proper storage and handling conditions.
RefSeq:	<a href="#">NP_001037729</a>
RefSeq Size:	672
RefSeq ORF:	417
Synonyms:	PSMP
Locus ID:	692094
UniProt ID:	<a href="#">Q1L6U9</a>
Cytogenetics:	9p13.3

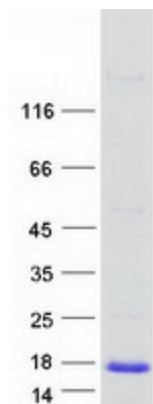


[View online »](#)

**Summary:** This gene encodes a member of the beta-microseminoprotein family. Members of this protein family contain ten conserved cysteine residues that form intra-molecular disulfide bonds. The encoded protein may play a role in prostate cancer tumorigenesis. [provided by RefSeq, Jan 2011]

**Protein Families:** Transmembrane

**Product images:**



Coomassie blue staining of purified MSMP protein (Cat# [TP322527]). The protein was produced from HEK293T cells transfected with MSMP cDNA clone (Cat# [RC222527]) using MegaTran 2.0 (Cat# [TT210002]).