

Product datasheet for PH322490

CSNK1G3 (NM_004384) Human Mass Spec Standard

Product data:

Product Type:	Mass Spec Standards
Description:	CSNK1G3 MS Standard C13 and N15-labeled recombinant protein (NP_004375)
Species:	Human
Expression Host:	HEK293
Expression cDNA Clone or AA Sequence:	RC222490
Predicted MW:	47.92 kDa
Protein Sequence:	>RC222490 representing NM_004384 Red=Cloning site Green=Tags(s)

MENKKKDKDKSDDRMARPSGRSGHNTRGTGSSSGVLMVGPNFRVGGKIGCGNFGELRLGKNLYTNEYVA
IKLEPMKSRAPQLHLEYRFYKQLGSGDGIPQVYYFGPCGKYNAMVLELLGPSLEDLFDLCDRTFSLKTVL
MIAIQLISRMEYVHKNLIYRDVKPENFLIGRPGNKTQQVIHIIDFALAKEYIDPETKKHIPYREHSLT
GTARYMSINTHLGKEQSRDDLEALGHMFMYFLRGSLPWQGLKADTLKERYQKIGDTKRATPIEVL CENF
PEMATYLRVRRLLDFEKPDDYDLRKLFTDLFDRKGYMFDYEYDWIGKQLPTVGAQQDPALSSNREAH
QHRDKMQQSKNQVVSSTNGELNTDDPTAGRSNAPITAPTEVEVMDKCCCFKRRKRKTIQRHK

TRTRPLEQKLI SEEDLAANDILDYKDDDDKV

Tag:	C-Myc/DDK
Purity:	> 80% as determined by SDS-PAGE and Coomassie blue staining
Concentration:	>0.05 µg/µL as determined by microplate BCA method
Labeling Method:	Labeled with [U- ¹³ C ₆ , ¹⁵ N ₄]-L-Arginine and [U- ¹³ C ₆ , ¹⁵ N ₂]-L-Lysine
Buffer:	25 mM Tris-HCl, 100 mM glycine, pH 7.3
Storage:	Store at -80°C. Avoid repeated freeze-thaw cycles.
Stability:	Stable for 3 months from receipt of products under proper storage and handling conditions.
RefSeq:	<u>NP_004375</u>
RefSeq Size:	4352
RefSeq ORF:	551
Synonyms:	CKI-gamma 3; CSNK1G3L
Locus ID:	1456



[View online »](#)

UniProt ID: [Q9Y6M4](#)

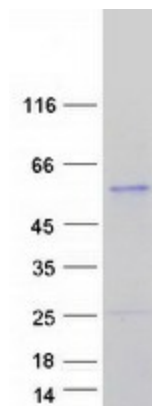
Cytogenetics: 5q23.2

Summary: This gene encodes a member of a family of serine/threonine protein kinases that phosphorylate caseins and other acidic proteins. A related protein in the African clawed frog participates in the transmission of Wnt/beta-catenin signaling. Alternatively spliced transcript variants encoding multiple isoforms have been observed for this gene. [provided by RefSeq, Jul 2012]

Protein Families: Druggable Genome, Protein Kinase

Protein Pathways: Hedgehog signaling pathway

Product images:



Coomassie blue staining of purified CSNK1G3 protein (Cat# [TP322490]). The protein was produced from HEK293T cells transfected with CSNK1G3 cDNA clone (Cat# [RC222490]) using MegaTran 2.0 (Cat# [TT210002]).