

## Product datasheet for PH322477

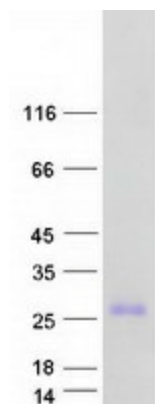
### GTSF1L (NM\_001008901) Human Mass Spec Standard

#### Product data:

Product Type:	Mass Spec Standards
Description:	GTSF1L MS Standard C13 and N15-labeled recombinant protein (NP_001008901)
Species:	Human
Expression Host:	HEK293
Expression cDNA Clone or AA Sequence:	RC222477
Predicted MW:	14 kDa
Protein Sequence:	>RC222477 representing NM_001008901 <b>Red</b> =Cloning site <b>Green</b> =Tags(s)  MEPEAFEICPYDPHHRIPLSRFQYHLASCRRKNPKKAKKMATCKYNACHVVPKLNLEEHAVCVNRS AVEEEDTENPLKVSPSPSEQNDDTQQTFFPQKVVCEKNDTKESARETSPQKILRPGQ  <b>TR</b> TRPLEQKLISEEDLAANDILDYKDDDDKV
Tag:	C-Myc/DDK
Purity:	> 80% as determined by SDS-PAGE and Coomassie blue staining
Concentration:	>0.05 µg/µL as determined by microplate BCA method
Labeling Method:	Labeled with [U- 13C6, 15N4]-L-Arginine and [U- 13C6, 15N2]-L-Lysine
Buffer:	25 mM Tris-HCl, 100 mM glycine, pH 7.3
Storage:	Store at -80°C. Avoid repeated freeze-thaw cycles.
Stability:	Stable for 3 months from receipt of products under proper storage and handling conditions.
RefSeq:	<a href="#">NP_001008901</a>
RefSeq Size:	773
RefSeq ORF:	369
Synonyms:	C20orf65; dJ1028D15.4; FAM112A
Locus ID:	149699
UniProt ID:	<a href="#">Q9H1H1</a>
Cytogenetics:	20q13.12



[View online »](#)

**Product images:**

Coomassie blue staining of purified GTSF1L protein (Cat# [TP322477]). The protein was produced from HEK293T cells transfected with GTSF1L cDNA clone (Cat# [RC222477]) using MegaTran 2.0 (Cat# [TT210002]).