

Product datasheet for PH322437

ANKRD16 (NM_001009942) Human Mass Spec Standard

Product data:

Product Type:	Mass Spec Standards
Description:	ANKRD16 MS Standard C13 and N15-labeled recombinant protein (NP_001009942)
Species:	Human
Expression Host:	HEK293
Expression cDNA Clone or AA Sequence:	RC222437
Predicted MW:	35.3 kDa
Protein Sequence:	>RC222437 representing NM_001009942 Red=Cloning site Green=Tags(s) MAQPGDPRRLCRLVQEGRLRALKEELQAAGGCPGPAGDTHLHCAARHGHRDVLAYLAEAWGMDIEATNRD YKRPLHEAASMGRDCVRYLLGRGAADVCLKKADWTPLMMACTRKNLGVIQELVEHGANPLLKNDGWNS FHIASREGDPLILQYLLTVCPGAWKTESKIRRTPLHTAAMHGHEAVKVLKRCQYEPDYRDNCVGTALM DAIQCGHIDVARLLLDEHGACLSAEDSLGAQALHRAAVTGHTSTIQTLLSLGADINSKDEKNRSALHLAC AGQHLACAKFLLQSGLKDSEITGTLAQQLPRRADVLQSGHSAMT TRTRPLEQKLISEEDLAANDILDYKDDDDKV
Tag:	C-Myc/DDK
Purity:	> 80% as determined by SDS-PAGE and Coomassie blue staining
Concentration:	>0.05 µg/µL as determined by microplate BCA method
Labeling Method:	Labeled with [U- ¹³ C ₆ , ¹⁵ N ₄]-L-Arginine and [U- ¹³ C ₆ , ¹⁵ N ₂]-L-Lysine
Buffer:	25 mM Tris-HCl, 100 mM glycine, pH 7.3
Storage:	Store at -80°C. Avoid repeated freeze-thaw cycles.
Stability:	Stable for 3 months from receipt of products under proper storage and handling conditions.
RefSeq:	NP_001009942
RefSeq Size:	1069
RefSeq ORF:	978
Synonyms:	ankyrin repeat domain 16; OTTHUMP00000019019; OTTHUMP00000044872
Locus ID:	54522



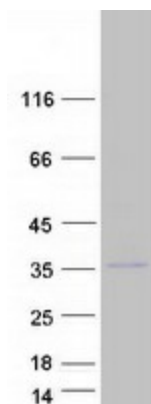
[View online »](#)

UniProt ID: [Q6P6B7](#)

Cytogenetics: 10p15.1

Summary: Required to prevent the misactivation of serine (Ser) with tRNA(Ala) by promoting the hydrolysis of Ser-mischarged tRNA(Ala), thereby playing a role in translational fidelity. Binds directly to the catalytic domain of AARS/AlaRS and captures Ser that is misactivated by AARS/AlaRS, preventing the charging of Ser adenylates to tRNA(Ala) and precluding Ser misincorporation in nascent peptides.[UniProtKB/Swiss-Prot Function]

Product images:



Coomassie blue staining of purified ANKRD16 protein (Cat# [TP322437]). The protein was produced from HEK293T cells transfected with ANKRD16 cDNA clone (Cat# [RC222437]) using MegaTran 2.0 (Cat# [TT210002]).