

Product datasheet for PH322425

Synphilin 1 (SNCAIP) (NM_005460) Human Mass Spec Standard

Product data:

Product Type:	Mass Spec Standards
Description:	SNCAIP MS Standard C13 and N15-labeled recombinant protein (NP_005451)
Species:	Human
Expression Host:	HEK293
Expression cDNA Clone or AA Sequence:	RC222425
Predicted MW:	100.9 kDa
Protein Sequence:	>RC222425 representing NM_005460 Red=Cloning site Green=Tags(s)

MEAPEYLDLDEIDFSDDISYSVTSCLKTIPELCRRCDTQNEEDRSVSSSSWNCGISTLITNTQKPTGIADV
SKFRPVKRVSPKHKQPETLENNE SDDQKNQKVVEYQKGGESDLGPQPQELGPGDGVGGPPGKSSEPSTSL
GELEHYDLDMDEILDVPYIKSSQQLASFVKVTSEKRILGLCTTINGLSGKACSTGSSESSSSNMAPPFCVL
SPVKSPHLRKASAVIHDQHLSTEETEISPLVKCGSAYEPENQSKDFLNKTFSDPHGRKVEKTTDPCQL
RAFHLQSSAAESKPEEQVSGLNRTSSQGPEERSEYLKVKVKSILNIVKEGQISLLPHLAADNLDKIHDENG
NNLLHIAASQGHAECLQHLTSLMGEDCLNERNTEKLTAGLAIKNGQLECVRWMVSETEAIAELSCSKDF
PSLIHYAGCYGQEKILLWLLQFMQEQGISLDEVDQDGN SAVHVASQHG YLGC IQTLVEYGANVTMQNHAG
EKPSQSAERQGH TLC SRYLVVVETCMLSASQVVKLTKQLKEQTVERTVLQNQLQQFLEAQKSEGKSLPSS
PSSPSSPASRKSQWKSPDADDDSVAKSKPGVQEGIQVLGSL SASSRARPKAKDESDKILRQLLKGKEISE
NVCTQEKLSLEFQDAQASSRNSKKIPELREKLARLRQLMQRSLSESDTDSNNSDPKTTVPVRKADRRP
PQPIVESVESMDSAESLHLMIKKHTLASGGRRFPFSIKASKSLDGHSPSPSESSEPDLESQYPGSGSIP
PNQPSGDPQQPSPDSTAAQKVATSPKSALKSPSSKRRTSQNLKLRVTFEFPVVMQEPSLELNGEKDKDK
GRTLQRTSTSNESGDQLKRPFGAFRSIMETLSGNQNNNNYQAANQLKTSTLPLTSLGRKTDAGKNPASS
ASKGKNKAA

TRTRPLEQKLI SEEDLAANDILDYKDDDDKV

Tag:	C-Myc/DDK
Purity:	> 80% as determined by SDS-PAGE and Coomassie blue staining
Concentration:	>0.05 µg/µL as determined by microplate BCA method
Labeling Method:	Labeled with [U- ¹³ C ₆ , ¹⁵ N ₄]-L-Arginine and [U- ¹³ C ₆ , ¹⁵ N ₂]-L-Lysine
Buffer:	25 mM Tris-HCl, 100 mM glycine, pH 7.3
Storage:	Store at -80°C. Avoid repeated freeze-thaw cycles.
Stability:	Stable for 3 months from receipt of products under proper storage and handling conditions.



[View online »](#)

RefSeq: [NP_005451](#)

RefSeq Size: 3569

RefSeq ORF: 2757

Synonyms: Sph1; SYPH1

Locus ID: 9627

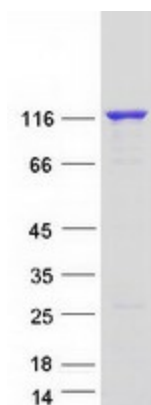
UniProt ID: [Q9Y6H5](#)

Cytogenetics: 5q23.2

Summary: This gene encodes a protein containing several protein-protein interaction domains, including ankyrin-like repeats, a coiled-coil domain, and an ATP/GTP-binding motif. The encoded protein interacts with alpha-synuclein in neuronal tissue and may play a role in the formation of cytoplasmic inclusions and neurodegeneration. A mutation in this gene has been associated with Parkinson's disease. Alternative splicing results in multiple transcript variants. [provided by RefSeq, Apr 2015]

Protein Pathways: Parkinson's disease

Product images:



Coomassie blue staining of purified SNCAIP protein (Cat# [TP322425]). The protein was produced from HEK293T cells transfected with SNCAIP cDNA clone (Cat# [RC222425]) using MegaTran 2.0 (Cat# [TT210002]).