

Product datasheet for PH322414

CCDC140 (NM_153038) Human Mass Spec Standard

Product data:

Product Type:	Mass Spec Standards
Description:	CCDC140 MS Standard C13 and N15-labeled recombinant protein (NP_694583)
Species:	Human
Expression Host:	HEK293
Expression cDNA Clone or AA Sequence:	RC222414
Predicted MW:	18.3 kDa
Protein Sequence:	<p>>RC222414 protein sequence</p> <p>Red=Cloning site Green=Tags(s)</p> <p>MGDECSNPDLLAEPGSSPPWDHGNQRQEAANESNTRVPRVLKAHLGPETAQPTKRSKRNRWRRQSCQGPS PARSGQFLGSADLGLQRGVLKSAARTCLSEISNSTRASPESAQSTDPGRAARPRTRLPTPHSFKIGEEA EEMKKKKERKRRKERKKERNFKK</p> <p>TRTRPLEQKLISEEDLAANDILDYKDDDDKV</p>
Tag:	C-Myc/DDK
Purity:	> 80% as determined by SDS-PAGE and Coomassie blue staining
Concentration:	>0.05 µg/µL as determined by microplate BCA method
Labeling Method:	Labeled with [U- ¹³ C ₆ , ¹⁵ N ₄]-L-Arginine and [U- ¹³ C ₆ , ¹⁵ N ₂]-L-Lysine
Buffer:	25 mM Tris-HCl, 100 mM glycine, pH 7.3
Storage:	Store at -80°C. Avoid repeated freeze-thaw cycles.
Stability:	Stable for 3 months from receipt of products under proper storage and handling conditions.
RefSeq:	NP_694583
RefSeq Size:	1699
RefSeq ORF:	489
Synonyms:	FLJ32447; MGC133159
Locus ID:	151278
UniProt ID:	Q96MF4

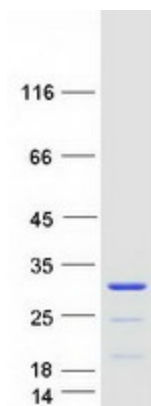


[View online »](#)

Cytogenetics: 2q36.1

Summary: This gene encodes a protein that appears to be restricted to select higher primate species. This protein contains a C-terminal coiled-coil domain, which is a versatile structural motif consisting of multiple amphipathic alpha-helices that twist around each other to form a supercoil. [provided by RefSeq, Aug 2011]

Product images:



Coomassie blue staining of purified CCDC140 protein (Cat# [TP322414]). The protein was produced from HEK293T cells transfected with CCDC140 cDNA clone (Cat# [RC222414]) using MegaTran 2.0 (Cat# [TT210002]).