

Product datasheet for PH322399

DLL1 (NM_005618) Human Mass Spec Standard

Product data:

Product Type:	Mass Spec Standards
Description:	DLL1 MS Standard C13 and N15-labeled recombinant protein (NP_005609)
Species:	Human
Expression Host:	HEK293
Expression cDNA Clone or AA Sequence:	RC222399
Predicted MW:	77.9 kDa
Protein Sequence:	>RC222399 representing NM_005618 Red=Cloning site Green=Tags(s)

MGSRCALALAVLSALLCQVWSSGVFELKLQEFVNKKGLLGNRCCRGAGPPPCACRTFFRVCLKHYQAS
VSPEPPCTYGSVTPVLGVDSFSLPDGGGADSAFNSPIRFPFGFTWPGTFSLII EALHTDSPDDLATENP
ERLISR LATQRHLTVGEEWSQDLHSSGRTDLKYSYRFVCD EHYYGEGCSVFCRPRDDAFGHFTCGERGEK
VCNPGWKGPYCTEPICLPGCDEQHGFCDKPGECKCRVWQGRYCD ECI RYPGCLHGTCQQPWQCNCQEGW
GGLFCNQDLNYCTHHKPKNGATCTNTGQGSYTCSCRPGYTGATCELGID ECDPSPCKNGGSCDLENSY
SCTCPPGFYGIKICELSAMTCADGPCFNGGRCSDSPDGGYSCRCPVGYSGFNCEKKIDYCSSPSCNGAKC
VDLGDAYLCRCQAGFSGRHCDDNVDDCASSPCANGGTCRDGVNDF SCTCPPGYTGRNCSAPVSRCEHAPC
HNGATC HERGHRVYCECARGYGGPNCQFLLPELPPGPAVVDLTEKLEGGQGFPPWAVCAGVILVLM LLL
GCAAVVVCVRLRLQKHRPPADPCRGETETMNNLANCQREKDISVSIIGATQIKNTNKKADFHGDHSADKN
DFKARYPAVDYNLVQDLKGGDTAVRDAHSKRDTKCQPQGS SSGEEKGTPPTTLRGGEASERKRPDSGCSTSK
DTKYQSVYVISEEKDECVIATEV

TRTRPLEQKLI SEEDLAANDILDYKDDDDKV

Tag:	C-Myc/DDK
Purity:	> 80% as determined by SDS-PAGE and Coomassie blue staining
Concentration:	>0.05 µg/µL as determined by microplate BCA method
Labeling Method:	Labeled with [U- ¹³ C ₆ , ¹⁵ N ₄]-L-Arginine and [U- ¹³ C ₆ , ¹⁵ N ₂]-L-Lysine
Buffer:	25 mM Tris-HCl, 100 mM glycine, pH 7.3
Storage:	Store at -80°C. Avoid repeated freeze-thaw cycles.
Stability:	Stable for 3 months from receipt of products under proper storage and handling conditions.
RefSeq:	<u>NP_005609</u>



[View online »](#)

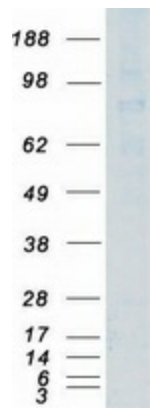
RefSeq Size:	3366
RefSeq ORF:	2169
Synonyms:	Delta; DELTA1; DL1; NEDBAS
Locus ID:	28514
UniProt ID:	O00548 , A0A384P5C6
Cytogenetics:	6q27

Summary: DLL1 is a human homolog of the Notch Delta ligand and is a member of the delta/serrate/jagged family. It plays a role in mediating cell fate decisions during hematopoiesis. It may play a role in cell-to-cell communication. [provided by RefSeq, Jul 2008]

Protein Families: Adult stem cells, Cancer stem cells, ES Cell Differentiation/IPS, Stem cell relevant signaling - DSL/Notch pathway, Transmembrane

Protein Pathways: Notch signaling pathway

Product images:



Coomassie blue staining of purified DLL1 protein (Cat# [TP322399]). The protein was produced from HEK293T cells transfected with DLL1 cDNA clone (Cat# [RC222399]) using MegaTran 2.0 (Cat# [TT210002]).