

Product datasheet for PH322378

SHISAL2A (NM_001042693) Human Mass Spec Standard

Product data:

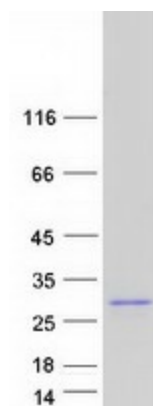
Product Type:	Mass Spec Standards
Description:	FAM159A MS Standard C13 and N15-labeled recombinant protein (NP_001036158)
Species:	Human
Expression Host:	HEK293
Expression cDNA Clone or AA Sequence:	RC222378
Predicted MW:	20.1 kDa
Protein Sequence:	<p>>RC222378 representing NM_001042693</p> <p>Red=Cloning site Green=Tags(s)</p> <p>MSGACTSYVSAEQEVVRGFSCPRPGGEAAAVFCCGFRDHKYCCDDPHSFFPYEHSYMWWSIGALIGLSV AAVVLLAFIVTACVLCYLFISSKPHTKLDLGLSLQTAGPEEVSPDCQGVNTGMAAEVPKVSPLQQSYSCL NPQLESNEGQAVNSKRLLLHCFMATVTTSDIPGSPEEASVPNDLCGPVP</p> <p>TRTRPLEQKLISEEDLAANDILDYKDDDDKV</p>
Tag:	C-Myc/DDK
Purity:	> 80% as determined by SDS-PAGE and Coomassie blue staining
Concentration:	>0.05 µg/µL as determined by microplate BCA method
Labeling Method:	Labeled with [U- ¹³ C ₆ , ¹⁵ N ₄]-L-Arginine and [U- ¹³ C ₆ , ¹⁵ N ₂]-L-Lysine
Buffer:	25 mM Tris-HCl, 100 mM glycine, pH 7.3
Storage:	Store at -80°C. Avoid repeated freeze-thaw cycles.
Stability:	Stable for 3 months from receipt of products under proper storage and handling conditions.
RefSeq:	NP_001036158
RefSeq Size:	698
RefSeq ORF:	570
Synonyms:	FAM159A; PRO7171; WWLS2783
Locus ID:	348378
UniProt ID:	Q6UWV7


[View online »](#)

Cytogenetics: 1p32.3

Protein Families: Transmembrane

Product images:



Coomassie blue staining of purified SHISAL2A protein (Cat# [TP322378]). The protein was produced from HEK293T cells transfected with SHISAL2A cDNA clone (Cat# [RC222378]) using MegaTran 2.0 (Cat# [TT210002]).