

## Product datasheet for PH322321

### SULT1A4 (NM\_001017389) Human Mass Spec Standard

#### Product data:

Product Type:	Mass Spec Standards
Description:	SULT1A4 MS Standard C13 and N15-labeled recombinant protein (NP_001017389)
Species:	Human
Expression Host:	HEK293
Expression cDNA Clone or AA Sequence:	RC222321
Predicted MW:	34.3 kDa
Protein Sequence:	>RC222321 protein sequence <b>Red</b> =Cloning site <b>Green</b> =Tags(s)  MELIQDTSRPPLEYVKGVPLIKYFAEALGPLQSFQARPDDLINTYPKSGTTWVSQILDMIYQGGDLEKC NRAPIYVRVPFLEVNDPGEPSGLETLKDTPPPRLIKSHLPLALLPQTLLDQKVKVYVARNPKDVAVSYY HFHRMEKAHPEPGTWDSFLEKFMAGEVSYWSWYQHVQEWELSRTHPVLVLFYEDMKENPKREIQILEF VGRSLPEETMDFMVQHTSFKEMKKNPMTNYTTVPQELMDHSISPFMRKGMAGDWKTTFTVAQNERFDADY AEKMAGCSLSFRSEL  <b>TRTRPLEQKLISEEDLAANDILDYKDDDDKV</b>
Tag:	C-Myc/DDK
Purity:	> 80% as determined by SDS-PAGE and Coomassie blue staining
Concentration:	>0.05 µg/µL as determined by microplate BCA method
Labeling Method:	Labeled with [U- <sup>13</sup> C <sub>6</sub> , <sup>15</sup> N <sub>4</sub> ]-L-Arginine and [U- <sup>13</sup> C <sub>6</sub> , <sup>15</sup> N <sub>2</sub> ]-L-Lysine
Buffer:	25 mM Tris-HCl, 100 mM glycine, pH 7.3
Storage:	Store at -80°C. Avoid repeated freeze-thaw cycles.
Stability:	Stable for 3 months from receipt of products under proper storage and handling conditions.
RefSeq:	<a href="#">NP_001017389</a>
RefSeq Size:	1574
RefSeq ORF:	885
Synonyms:	aryl sulfotransferase; phenol sulfotransferase; sulfokinase; sulfotransferase family, cytosolic, 1A, phenol-preferring, member 4



[View online »](#)

Locus ID: 445329

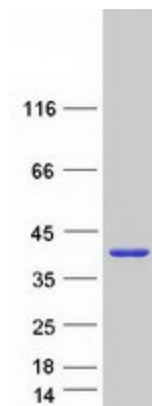
UniProt ID: [P50224](#)

Cytogenetics: 16p11.2

**Summary:** Sulfotransferase enzymes catalyze the sulfate conjugation of many hormones, neurotransmitters, drugs, and xenobiotic compounds. These cytosolic enzymes are different in their tissue distributions and substrate specificities. The gene structure (number and length of exons) is similar among family members. This gene encodes a phenol sulfotransferase with thermolabile enzyme activity. Four sulfotransferase genes are located on the p arm of chromosome 16, this gene and SULT1A3 arose from a segmental duplication. Read-through transcription exists between this gene and the upstream SLX1B (SLX1 structure-specific endonuclease subunit homolog B) gene that encodes a protein containing GIY-YIG domains. [provided by RefSeq, Nov 2010]

**Protein Pathways:** Sulfur metabolism

### Product images:



Coomassie blue staining of purified SULT1A4 protein (Cat# [TP322321]). The protein was produced from HEK293T cells transfected with SULT1A4 cDNA clone (Cat# [RC222321]) using MegaTran 2.0 (Cat# [TT210002]).