

Product datasheet for PH322310

CDK10 (NM_052988) Human Mass Spec Standard

Product data:

Product Type:	Mass Spec Standards
Description:	CDK10 MS Standard C13 and N15-labeled recombinant protein (NP_443714)
Species:	Human
Expression Host:	HEK293
Expression cDNA Clone or AA Sequence:	RC222310
Predicted MW:	40.9 kDa
Protein Sequence:	>RC222310 representing NM_052988 Red=Cloning site Green=Tags(s) MAEPDLECEQIRLKCIRKEGFFTPPEHRLGRCRSVKEFEKLNRI GEGTYGIVYRARDTQTDEIVALKKV RMDKEKDGIPISSLREITLLLRHRPNIVELKEVVVGNHLESIFLVMGYCEQDLASLLENMPTPFSEAQV KCIVLQVLRGLQYLHRNFIHRDLKVSNLLMTDKGCVKTADFGLARAYGVPVKPMTPKVVTLWYRAPELL LGT TTTQTTSIDMWAVGCILAELLAHRPLLPGTSEIHQIDLIVQLLGT PSENIWPGF SKLPLVGQYS LRKQ PYNLKHKFPWLSEAGRLRLHFLFMYDPKKRATAGDCLESSYFKEKPLPCEPELMPTFPHHRNKRAAPAT SEGQSKRCKP TRTRPLEQKLI SEEDLAANDILDYKDDDDKV
Tag:	C-Myc/DDK
Purity:	> 80% as determined by SDS-PAGE and Coomassie blue staining
Concentration:	>0.05 µg/µL as determined by microplate BCA method
Labeling Method:	Labeled with [U- ¹³ C ₆ , ¹⁵ N ₄]-L-Arginine and [U- ¹³ C ₆ , ¹⁵ N ₂]-L-Lysine
Buffer:	25 mM Tris-HCl, 100 mM glycine, pH 7.3
Storage:	Store at -80°C. Avoid repeated freeze-thaw cycles.
Stability:	Stable for 3 months from receipt of products under proper storage and handling conditions.
RefSeq:	NP_443714
RefSeq Size:	1803
RefSeq ORF:	1080
Synonyms:	ALSAS; PISSLRE
Locus ID:	8558



[View online »](#)

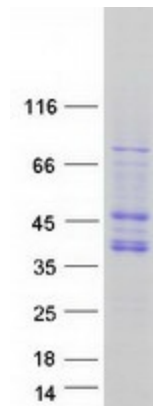
UniProt ID: [Q15131](#), [B7Z537](#)

Cytogenetics: 16q24.3

Summary: The protein encoded by this gene belongs to the CDK subfamily of the Ser/Thr protein kinase family. The CDK subfamily members are highly similar to the gene products of *S. cerevisiae* *cdc28*, and *S. pombe* *cdc2*, and are known to be essential for cell cycle progression. This kinase has been shown to play a role in cellular proliferation and its function is limited to cell cycle G2-M phase. Multiple transcript variants encoding different isoforms have been found for this gene. [provided by RefSeq, May 2009]

Protein Families: Druggable Genome, Protein Kinase

Product images:



Coomassie blue staining of purified CDK10 protein (Cat# [TP322310]). The protein was produced from HEK293T cells transfected with CDK10 cDNA clone (Cat# [RC222310]) using MegaTran 2.0 (Cat# [TT210002]).