

Product datasheet for PH322302

CKII alpha (CSNK2A1) (NM_001895) Human Mass Spec Standard

Product data:

Product Type:	Mass Spec Standards
Description:	CSNK2A1 MS Standard C13 and N15-labeled recombinant protein (NP_001886)
Species:	Human
Expression Host:	HEK293
Expression cDNA Clone or AA Sequence:	RC222302
Predicted MW:	45 kDa
Protein Sequence:	>RC222302 representing NM_001895 Red=Cloning site Green=Tags(s) MSGPVPSRARVYTDVNTHRPREYWDYESHVVEWGNQDDYQLVRKLGKGYSEVFEAINITNNEKVVKIL KPVKIKKIKREIKILENLRGGPNIITLADIVKDPVSRTPALVFEHVNTDFKQLYQTLTDYDIRFYMEI LKALDYCHSMGIMHRDVKPHNVMIDHEHRKRLRIDWGLAEFYHPGQEYNVRVASRYFKGPELLVDYQMYD YSLDMWSLGCMLASMIFRKEPFFHGHNDYDQLVRIAKVLGTEDLYDYIDKYNIELDPRFNDILGRHSRKR WERFVHSENQHLVSPEALDFLDKLLRYDHQSRLTAREAMEHPYFYTVVKDQARMGSSMPGGSTPVSSAN MMSGISSVPTSPPLGPLAGSPVIAAANPLGMPVPAAGAQQ TRTRPLEQKLI SEEDLAANDILDYKDDDDKV
Tag:	C-Myc/DDK
Purity:	> 80% as determined by SDS-PAGE and Coomassie blue staining
Concentration:	>0.05 µg/µL as determined by microplate BCA method
Labeling Method:	Labeled with [U- ¹³ C ₆ , ¹⁵ N ₄]-L-Arginine and [U- ¹³ C ₆ , ¹⁵ N ₂]-L-Lysine
Buffer:	25 mM Tris-HCl, 100 mM glycine, pH 7.3
Storage:	Store at -80°C. Avoid repeated freeze-thaw cycles.
Stability:	Stable for 3 months from receipt of products under proper storage and handling conditions.
RefSeq:	<u>NP_001886</u>
RefSeq Size:	2732
RefSeq ORF:	1173
Synonyms:	CK2A1; Cka1; Cka2; CKII; OCNDS
Locus ID:	1457



[View online »](#)

UniProt ID: [P68400](#)

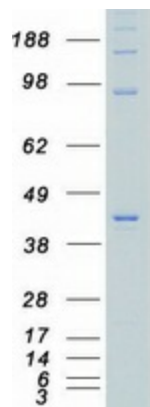
Cytogenetics: 20p13

Summary: Casein kinase II is a serine/threonine protein kinase that phosphorylates acidic proteins such as casein. It is involved in various cellular processes, including cell cycle control, apoptosis, and circadian rhythm. The kinase exists as a tetramer and is composed of an alpha, an alpha-prime, and two beta subunits. The alpha subunits contain the catalytic activity while the beta subunits undergo autophosphorylation. The protein encoded by this gene represents the alpha subunit. Multiple transcript variants encoding different protein isoforms have been found for this gene. [provided by RefSeq, Apr 2018]

Protein Families: Druggable Genome, ES Cell Differentiation/IPS, Protein Kinase

Protein Pathways: Adherens junction, Tight junction, Wnt signaling pathway

Product images:



Coomassie blue staining of purified CSNK2A1 protein (Cat# [TP322302]). The protein was produced from HEK293T cells transfected with CSNK2A1 cDNA clone (Cat# [RC222302]) using MegaTran 2.0 (Cat# [TT210002]).