

## Product datasheet for PH322285

### TCN1 (NM\_001062) Human Mass Spec Standard

#### Product data:

Product Type:	Mass Spec Standards
Description:	TCN1 MS Standard C13 and N15-labeled recombinant protein (NP_001053)
Species:	Human
Expression Host:	HEK293
Expression cDNA Clone or AA Sequence:	RC222285
Predicted MW:	46.9 kDa
Protein Sequence:	>RC222285 representing NM_001062 Red=Cloning site Green=Tags(s)  MRQSHQLPLVGLLLFSFIPSQLCEICEVSEENYIRLKPLLNTMIQSNYNRGTSAVNVVLSLKLVGIIQIT LMQKMIQQIKYNVKSRLSDVSSGELAL IILALGVCRAEENLIYDYHLIDKLENKFQAEIENMEAHNGTP LTNYYQLSLDVLALCLFNGNYSTAEVVNHFTPENKNYYFGSQFSVDTGAMAVLALTCVKKSLINGQIKAD EGSLKNIISIYTKSLVEKILSEKKENGLIGNTFSTGEAMQALFVSSDYNNENDWNCQQLNTVLTEISQGA FSNPNAQAQVLPALMGKTFLDINKDSSCVSASGNFNISADEPITVTPDSSQSYISVNYSVRINETYFTNV TVLNGSVFLSVMEKAQKMNDTIFGFTMEERSWGPYITCIQGLCANNNDRTYWELLSGGEPLSQGAGSYVV RNG  TRTRPLEQKLISEEDLAANDILDYKDDDDKV
Tag:	C-Myc/DDK
Purity:	> 80% as determined by SDS-PAGE and Coomassie blue staining
Concentration:	>0.05 µg/µL as determined by microplate BCA method
Labeling Method:	Labeled with [U- <sup>13</sup> C <sub>6</sub> , <sup>15</sup> N <sub>4</sub> ]-L-Arginine and [U- <sup>13</sup> C <sub>6</sub> , <sup>15</sup> N <sub>2</sub> ]-L-Lysine
Buffer:	25 mM Tris-HCl, 100 mM glycine, pH 7.3
Storage:	Store at -80°C. Avoid repeated freeze-thaw cycles.
Stability:	Stable for 3 months from receipt of products under proper storage and handling conditions.
RefSeq:	<u>NP_001053</u>
RefSeq Size:	1576
RefSeq ORF:	1269
Synonyms:	HC; TC-1; TC1; TCI



[View online »](#)

Locus ID: 6947

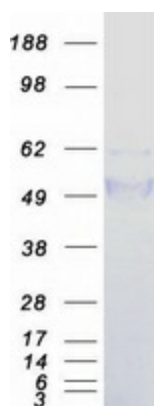
UniProt ID: [P20061](#)

Cytogenetics: 11q12.1

**Summary:** This gene encodes a member of the vitamin B12-binding protein family. This family of proteins, alternatively referred to as R binders, is expressed in various tissues and secretions. This protein is a major constituent of secondary granules in neutrophils and facilitates the transport of cobalamin into cells. [provided by RefSeq, Jul 2008]

**Protein Families:** Secreted Protein

### Product images:



Coomassie blue staining of purified TCN1 protein (Cat# [TP322285]). The protein was produced from HEK293T cells transfected with TCN1 cDNA clone (Cat# [RC222285]) using MegaTran 2.0 (Cat# [TT210002]).