

Product datasheet for PH322278

Calpastatin (CAST) (NM_173061) Human Mass Spec Standard

Product data:

Product Type:	Mass Spec Standards
Description:	CAST MS Standard C13 and N15-labeled recombinant protein (NP_775084)
Species:	Human
Expression Host:	HEK293
Expression cDNA Clone or AA Sequence:	RC222278
Predicted MW:	46.9 kDa
Protein Sequence:	>RC222278 representing NM_173061 Red=Cloning site Green=Tags(s) MGQFLSSTFLEGGPATVWHDKLCDGERRGAREAVRIFQDQAKAKEEKLEKCGEDDETIPSEYRLKPATDK DGKPLLPEPEEKPKRSESELIDELSEDFRSECKEKPSPKTEKTEESKAAAPAPVSEAVCRTSMCSIQS APPEPATLKGTVPDDAVEALADSLGKKEADPEDGKPVMDKVKEKAKEEDREKLGEKEETIPPDYRLEEVEK DKDGKPLLPKESKEQLPPMSEDFLLDALSEDFSGPQNASSLKFEDAKLAAAISEVVSQTPASTTQAGAPP RDTSSDKDLDDALDKLSDSLGQRQPDPPDENKPMEDKVKEKAKAEHRDKLGERDDTIPPEYRHLDDNGQD KPVKPPTKKSEDSKPPADDQDPIDALSGDLDCPSTTETSQNTAKDKCKKAASSSKAPKNGGKAKDSAKT TEETSKPKDD TRTRPLEQKLISEEDLAANDILDYKDDDDKV
Tag:	C-Myc/DDK
Purity:	> 80% as determined by SDS-PAGE and Coomassie blue staining
Concentration:	>0.05 µg/µL as determined by microplate BCA method
Labeling Method:	Labeled with [U- ¹³ C ₆ , ¹⁵ N ₄]-L-Arginine and [U- ¹³ C ₆ , ¹⁵ N ₂]-L-Lysine
Buffer:	25 mM Tris-HCl, 100 mM glycine, pH 7.3
Storage:	Store at -80°C. Avoid repeated freeze-thaw cycles.
Stability:	Stable for 3 months from receipt of products under proper storage and handling conditions.
RefSeq:	<u>NP_775084</u>
RefSeq Size:	1889
RefSeq ORF:	1290



[View online »](#)

Synonyms: BS-17; calpain inhibitor; calpastatin; heart-type calpastatin; MGC9402; OTTHUMP00000158519; OTTHUMP00000158520; sperm BS-17 component

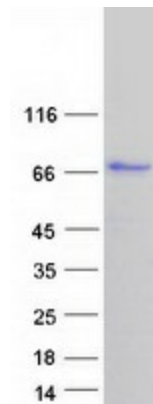
Locus ID: 831

UniProt ID: [P20810](#)

Cytogenetics: 5q15

Summary: The protein encoded by this gene is an endogenous calpain (calcium-dependent cysteine protease) inhibitor. It consists of an N-terminal domain L and four repetitive calpain-inhibition domains (domains 1-4), and it is involved in the proteolysis of amyloid precursor protein. The calpain/calpastatin system is involved in numerous membrane fusion events, such as neural vesicle exocytosis and platelet and red-cell aggregation. The encoded protein is also thought to affect the expression levels of genes encoding structural or regulatory proteins. Alternatively spliced transcript variants encoding different isoforms have been described. [provided by RefSeq, Jun 2010]

Product images:



Coomassie blue staining of purified CAST protein (Cat# [TP322278]). The protein was produced from HEK293T cells transfected with CAST cDNA clone (Cat# [RC222278]) using MegaTran 2.0 (Cat# [TT210002]).