

## Product datasheet for PH322271

### Hemopexin (HPX) (NM\_000613) Human Mass Spec Standard

#### Product data:

Product Type:	Mass Spec Standards
Description:	HPX MS Standard C13 and N15-labeled recombinant protein (NP_000604)
Species:	Human
Expression Host:	HEK293
Expression cDNA Clone or AA Sequence:	RC222271
Predicted MW:	51.68 kDa
Protein Sequence:	>RC222271 representing NM_000613 Red=Cloning site Green=Tags(s)
	MARVLGAPVALGLWSLCWSLAIATPLPPTSAHGNAEGETKPPDVTERCSDGWSFDATTLDDNGTMLFF KGEFVWKSCHKWDRELISERWKNFSPVDAAFRQGHNSVFLIKGDKVWVYPPKEKKEGYPKLLQDEFPGIP SPLDAAVECHRGECAEGVLEFFQGDREWFDLATGTMKERSWPAVGNCSALRWLGRYYCFQGNQFLRFD PVRGEVPPRYPRDVRDYFPCPGRGHGHRNGTGHGNSTHHGPEYMRCSPHLVLSALTSNDHGATYAFSGT HYWRLDTSRDGWHSPIAHQWPQGPSAVDAAFSWEEKLYLVQGTQYVFLTKGGYTLVSGYPKRLEKEVG TPHGIILDSVDAAFICPGSSRLHIMAGRRLWWLDLKSGAQATWTELPWPHEKVDGALCMEKSLGPNSSCA NGPGLYL IHGPNLYCYS DVEKLNAAKALPQPQNVTSLLGCTH
	TRTRPLEQKLI SEEDLAANDILDYKDDDDKV
Tag:	C-Myc/DDK
Purity:	> 80% as determined by SDS-PAGE and Coomassie blue staining
Concentration:	>0.05 µg/µL as determined by microplate BCA method
Labeling Method:	Labeled with [U- <sup>13</sup> C <sub>6</sub> , <sup>15</sup> N <sub>4</sub> ]-L-Arginine and [U- <sup>13</sup> C <sub>6</sub> , <sup>15</sup> N <sub>2</sub> ]-L-Lysine
Buffer:	25 mM Tris-HCl, 100 mM glycine, pH 7.3
Storage:	Store at -80°C. Avoid repeated freeze-thaw cycles.
Stability:	Stable for 3 months from receipt of products under proper storage and handling conditions.
RefSeq:	<u>NP_000604</u>
RefSeq Size:	1389
RefSeq ORF:	1386
Synonyms:	HX



[View online »](#)

Locus ID: 3263

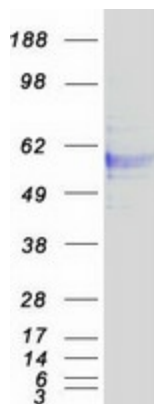
UniProt ID: [P02790](#), [Q9BS19](#), [Q5T248](#)

Cytogenetics: 11p15.4

Summary: This gene encodes a plasma glycoprotein that binds heme with high affinity. The encoded protein is an acute phase protein that transports heme from the plasma to the liver and may be involved in protecting cells from oxidative stress. [provided by RefSeq, Apr 2009]

Protein Families: Secreted Protein

### Product images:



Coomassie blue staining of purified HPX protein (Cat# [TP322271]). The protein was produced from HEK293T cells transfected with HPX cDNA clone (Cat# [RC222271]) using MegaTran 2.0 (Cat# [TT210002]).