

## Product datasheet for PH322245

### Motilin (MLN) (NM\_002418) Human Mass Spec Standard

#### Product data:

Product Type:	Mass Spec Standards
Description:	MLN MS Standard C13 and N15-labeled recombinant protein (NP_002409)
Species:	Human
Expression Host:	HEK293
Expression cDNA Clone or AA Sequence:	RC222245
Predicted MW:	12.9 kDa
Protein Sequence:	>RC222245 protein sequence Red=Cloning site Green=Tags(s)  MYSRKAVAALLVVHAAAMLASQTEAFVPIFTYGELQRMQEKERNKGQKKSLSVWQRSGEEGPVDPAPPIR EEENEMIKLTAPLEIGMRMNSRQLEKYPATLEGLLSEMLPQHAAK  TRTRPLEQKLISEEDLAANDILDYKDDDDKV
Tag:	C-Myc/DDK
Purity:	> 80% as determined by SDS-PAGE and Coomassie blue staining
Concentration:	>0.05 µg/µL as determined by microplate BCA method
Labeling Method:	Labeled with [U- 13C6, 15N4]-L-Arginine and [U- 13C6, 15N2]-L-Lysine
Buffer:	25 mM Tris-HCl, 100 mM glycine, pH 7.3
Storage:	Store at -80°C. Avoid repeated freeze-thaw cycles.
Stability:	Stable for 3 months from receipt of products under proper storage and handling conditions.
RefSeq:	<a href="#">NP_002409</a>
RefSeq Size:	572
RefSeq ORF:	345
Locus ID:	4295
UniProt ID:	<a href="#">P12872</a>
Cytogenetics:	6p21.31



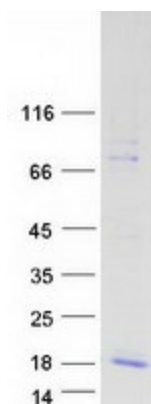
[View online »](#)

**Summary:**

This gene encodes a small peptide hormone that is secreted by cells of the small intestine to regulate gastrointestinal contractions and motility. Proteolytic processing of the secreted protein produces the mature peptide and a byproduct referred to as motilin-associated peptide (MAP). Three transcript variants encoding different preproprotein isoforms but the same mature peptide have been found for this gene. [provided by RefSeq, May 2010]

**Protein Families:**

Druggable Genome, Secreted Protein, Transmembrane

**Product images:**

Coomassie blue staining of purified MLN protein (Cat# [TP322245]). The protein was produced from HEK293T cells transfected with MLN cDNA clone (Cat# [RC222245]) using MegaTran 2.0 (Cat# [TT210002]).