

Product datasheet for PH322240

PACRG (NM_001080378) Human Mass Spec Standard

Product data:

Product Type:	Mass Spec Standards
Description:	PACRG MS Standard C13 and N15-labeled recombinant protein (NP_001073847)
Species:	Human
Expression Host:	HEK293
Expression cDNA Clone or AA Sequence:	RC222240
Predicted MW:	29.3 kDa
Protein Sequence:	>RC222240 protein sequence Red=Cloning site Green=Tags(s) MVAEKETLSLNKCPDKMPKRTKLLAQQLPVHQPHSLVSEGFTVKAMMKNSVVRGPPAAGAFKERPTKPT AFRKFYERGFPIALEHDSKGNKIAWKVEIEKLDYHHYLPFFDGLCEMTFPYEFARQGIHDMLEHGGN KILPVLPLQLIIPKINALNLRNRQVICVTLKVLQHLVVS AEMVGKALVPYYRQILPVLNIFKNMNVNSGDG IDYSQQKRENIGDLIQETLEAFERYGGENAFINIKYVVPTYESCLLN TRTRPLEQKLI SEEDLAANDILDYKDDDDKV
Tag:	C-Myc/DDK
Purity:	> 80% as determined by SDS-PAGE and Coomassie blue staining
Concentration:	>0.05 µg/µL as determined by microplate BCA method
Labeling Method:	Labeled with [U- ¹³ C ₆ , ¹⁵ N ₄]-L-Arginine and [U- ¹³ C ₆ , ¹⁵ N ₂]-L-Lysine
Buffer:	25 mM Tris-HCl, 100 mM glycine, pH 7.3
Storage:	Store at -80°C. Avoid repeated freeze-thaw cycles.
Stability:	Stable for 3 months from receipt of products under proper storage and handling conditions.
RefSeq:	NP_001073847
RefSeq Size:	1585
RefSeq ORF:	771
Synonyms:	GLUP; HAK005771; PACRG2.1; PARK2CRG
Locus ID:	135138
UniProt ID:	Q96M98



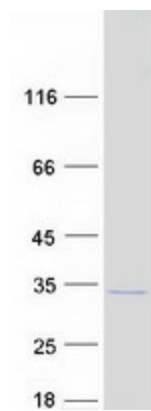
[View online »](#)

Cytogenetics: 6q26

Summary: This gene encodes a protein that is conserved across metazoans. In vertebrates, this gene is linked in a head-to-head arrangement with the adjacent parkin gene, which is associated with autosomal recessive juvenile Parkinson's disease. These genes are co-regulated in various tissues and they share a bi-directional promoter. Both genes are associated with susceptibility to leprosy. The parkin co-regulated gene protein forms a large molecular complex with chaperones, including heat shock proteins 70 and 90, and chaperonin components. This protein is also a component of Lewy bodies in Parkinson's disease patients, and it suppresses unfolded Pael receptor-induced neuronal cell death. Multiple transcript variants encoding different isoforms have been found for this gene. [provided by RefSeq, Jul 2008]

Protein Families: Druggable Genome

Product images:



Coomassie blue staining of purified PACRG protein (Cat# [TP322240]). The protein was produced from HEK293T cells transfected with PACRG cDNA clone (Cat# [RC222240]) using MegaTran 2.0 (Cat# [TT210002]).