

## Product datasheet for PH322176

### LCE3A (NM\_178431) Human Mass Spec Standard

#### Product data:

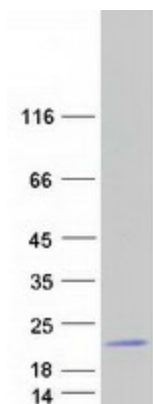
Product Type:	Mass Spec Standards
Description:	LCE3A MS Standard C13 and N15-labeled recombinant protein (NP_848518)
Species:	Human
Expression Host:	HEK293
Expression cDNA Clone or AA Sequence:	RC222176
Predicted MW:	9 kDa
Protein Sequence:	>RC222176 representing NM_178431 <b>Red</b> =Cloning site <b>Green</b> =Tags(s)  MSCQQNQQQCQPPPKCPAKSPAQCLPPASSSCAPSSGGCGPSSERSCLSHHRCRRSHRCRCQSSNSCDR GSGQQGGSSSCGHSSAGCC  <b>TR</b> TRPLEQKLISEEDLAANDILDYKDDDDKV
Tag:	C-Myc/DDK
Purity:	> 80% as determined by SDS-PAGE and Coomassie blue staining
Concentration:	>0.05 µg/µL as determined by microplate BCA method
Labeling Method:	Labeled with [U- 13C6, 15N4]-L-Arginine and [U- 13C6, 15N2]-L-Lysine
Buffer:	25 mM Tris-HCl, 100 mM glycine, pH 7.3
Storage:	Store at -80°C. Avoid repeated freeze-thaw cycles.
Stability:	Stable for 3 months from receipt of products under proper storage and handling conditions.
RefSeq:	<a href="#">NP_848518</a>
RefSeq Size:	270
RefSeq ORF:	267
Synonyms:	LEP13
Locus ID:	353142
UniProt ID:	<a href="#">Q5TA76</a>
Cytogenetics:	1q21.3



[View online »](#)

**Summary:**

A structural component of the cornified envelope of the stratum corneum involved in innate cutaneous host defense (Probable). Possesses defensin-like antimicrobial activity against a broad spectrum of Gram-positive and Gram-negative bacteria, both aerobic and anaerobic species. Upon inflammation, may regulate skin barrier repair by shaping cutaneous microbiota composition and immune response to bacterial antigens (PubMed:28634035). [UniProtKB/Swiss-Prot Function]

**Product images:**

Coomassie blue staining of purified LCE3A protein (Cat# [TP322176]). The protein was produced from HEK293T cells transfected with LCE3A cDNA clone (Cat# [RC222176]) using MegaTran 2.0 (Cat# [TT210002]).