

## Product datasheet for PH322165

### S100 Calcium Binding Protein A13 (S100A13) (NM\_005979) Human Mass Spec Standard

#### Product data:

Product Type:	Mass Spec Standards
Description:	S100A13 MS Standard C13 and N15-labeled recombinant protein (NP_005970)
Species:	Human
Expression Host:	HEK293
Expression cDNA Clone or AA Sequence:	RC222165
Predicted MW:	11.5 kDa
Protein Sequence:	>RC222165 protein sequence Red=Cloning site Green=Tags(s)  MAAEPLTELEESIETVVTFFTFARQEGRKDSLVSNEFKELVTQQLPHLLKDVGSLDEKMKSLDVNQDSE LKFNEYWRLIGELAKEIRKKKDLKIRKK  TRTRPLEQKLISEEDLAANDILDYKDDDDKV
Tag:	C-Myc/DDK
Purity:	> 80% as determined by SDS-PAGE and Coomassie blue staining
Concentration:	>0.05 µg/µL as determined by microplate BCA method
Labeling Method:	Labeled with [U- 13C6, 15N4]-L-Arginine and [U- 13C6, 15N2]-L-Lysine
Buffer:	25 mM Tris-HCl, 100 mM glycine, pH 7.3
Storage:	Store at -80°C. Avoid repeated freeze-thaw cycles.
Stability:	Stable for 3 months from receipt of products under proper storage and handling conditions.
RefSeq:	<a href="#">NP_005970</a>
RefSeq Size:	743
RefSeq ORF:	294
Locus ID:	6284
UniProt ID:	<a href="#">Q99584</a>
Cytogenetics:	1q21.3



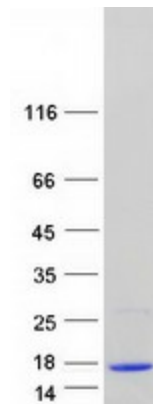
[View online »](#)

**Summary:**

The protein encoded by this gene is a member of the S100 family of proteins containing 2 EF-hand calcium-binding motifs. S100 proteins are localized in the cytoplasm and/or nucleus of a wide range of cells, and involved in the regulation of a number of cellular processes such as cell cycle progression and differentiation. S100 genes include at least 13 members which are located as a cluster on chromosome 1q21. This protein is widely expressed in various types of tissues with a high expression level in thyroid gland. In smooth muscle cells, this protein co-expresses with other family members in the nucleus and in stress fibers, suggesting diverse functions in signal transduction. Multiple alternatively spliced transcript variants encoding the same protein have been found for this gene. [provided by RefSeq, Jul 2008]

**Protein Families:**

Druggable Genome

**Product images:**

Coomassie blue staining of purified S100A13 protein (Cat# [TP322165]). The protein was produced from HEK293T cells transfected with S100A13 cDNA clone (Cat# [RC222165]) using MegaTran 2.0 (Cat# [TT210002]).