

Product datasheet for PH322163

CHN 1 (CHN1) (NM_001822) Human Mass Spec Standard

Product data:

Product Type:	Mass Spec Standards
Description:	CHN1 MS Standard C13 and N15-labeled recombinant protein (NP_001813)
Species:	Human
Expression Host:	HEK293
Expression cDNA Clone or AA Sequence:	RC222163
Predicted MW:	53 kDa
Protein Sequence:	>RC222163 representing NM_001822 Red=Cloning site Green=Tags(s)

MALTLFDTDEYRPPVWKSYLEYQLQQEAPHRRITCTCEVENRPKYGREFHGMISREAADQLLIVAEGSY
L IRESQRQPGTYTLALRFGSQTRNFRLLYYDGKHFVGEKRFESIHDLVTDGLITLYIETKAAEYIAKMTIN
PIYEHVGYTTLNREPAYKKHMPVLKETHDERDSTGQDGVSEKRLTSLVRRATLKENEQIPKYEKIHNFKV
HTFRGPHWCEYCANFMWGLIAQGVKCADCGLNVHKQCSKMPNDCKPDLKHVKKVYSCDLTTLVKAHTTK
RPMVVDMCIREIESRGLNSEGLYRVSGFSDLIEDVKMAFDRDGEKADISVNMVEDINIITGALKLYFRDL
PIPLITYDAYPKFIESAKIMDPDEQLETLHEALKLLPPAHCETLRYLMAHLKRVTLHEKENLMNAENLGI
VFGPTLMRSPELDAMAALNDIRYQRLVVELLIKNEIDILF

TRTRPLEQKLISEEDLAANDILDYKDDDDKV

Tag:	C-Myc/DDK
Purity:	> 80% as determined by SDS-PAGE and Coomassie blue staining
Concentration:	>0.05 µg/µL as determined by microplate BCA method
Labeling Method:	Labeled with [U- ¹³ C ₆ , ¹⁵ N ₄]-L-Arginine and [U- ¹³ C ₆ , ¹⁵ N ₂]-L-Lysine
Buffer:	25 mM Tris-HCl, 100 mM glycine, pH 7.3
Storage:	Store at -80°C. Avoid repeated freeze-thaw cycles.
Stability:	Stable for 3 months from receipt of products under proper storage and handling conditions.
RefSeq:	<u>NP_001813</u>
RefSeq Size:	2607
RefSeq ORF:	1377
Synonyms:	ARHGAP2; CHN; DURS2; NC; RHOGAP2

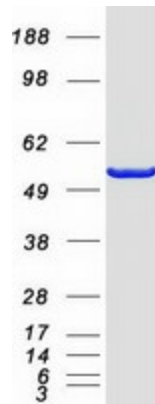


[View online »](#)

Locus ID: 1123
UniProt ID: [P15882](#)
Cytogenetics: 2q31.1

Summary: This gene encodes GTPase-activating protein for ras-related p21-rac and a phorbol ester receptor. It is predominantly expressed in neurons, and plays an important role in neuronal signal-transduction mechanisms. Mutations in this gene are associated with Duane's retraction syndrome 2 (DURS2). Alternatively spliced transcript variants encoding different isoforms have been described for this gene. [provided by RefSeq, Apr 2011]

Product images:



Coomassie blue staining of purified CHN1 protein (Cat# [TP322163]). The protein was produced from HEK293T cells transfected with CHN1 cDNA clone (Cat# [RC222163]) using MegaTran 2.0 (Cat# [TT210002]).