

## Product datasheet for PH322158

### FAM9C (NM\_174901) Human Mass Spec Standard

#### Product data:

Product Type:	Mass Spec Standards
Description:	FAM9C MS Standard C13 and N15-labeled recombinant protein (NP_777561)
Species:	Human
Expression Host:	HEK293
Expression cDNA Clone or AA Sequence:	RC222158
Predicted MW:	19.2 kDa
Protein Sequence:	<p>&gt;RC222158 protein sequence</p> <p>Red=Cloning site Green=Tags(s)</p> <p>MAAKDQLEVQVMAAQEMELAGKDPVSHEHEERKPVTTETKEGDVTDEHGERGSFAETDEHTGVDTKELEDI  AADIKEHLAAKRKRIEKIAKACSEIKNRIKNVLRTTQLKRQKRDYRISLKLPNVLEEFITDEQKDEEGDG  EKEEQIKIFQEQQKRWQQDGKGTED</p> <p>TRTRPLEQKLISEEDLAANDILDYKDDDDKV</p>
Tag:	C-Myc/DDK
Purity:	> 80% as determined by SDS-PAGE and Coomassie blue staining
Concentration:	>0.05 µg/µL as determined by microplate BCA method
Labeling Method:	Labeled with [U- 13C6, 15N4]-L-Arginine and [U- 13C6, 15N2]-L-Lysine
Buffer:	25 mM Tris-HCl, 100 mM glycine, pH 7.3
Storage:	Store at -80°C. Avoid repeated freeze-thaw cycles.
Stability:	Stable for 3 months from receipt of products under proper storage and handling conditions.
RefSeq:	<u>NP_777561</u>
RefSeq Size:	1255
RefSeq ORF:	498
Synonyms:	TEX39C
Locus ID:	171484
UniProt ID:	<u>Q8IZT9</u> , <u>A0A024RBW5</u>

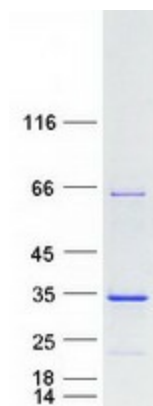


[View online »](#)

**Cytogenetics:** Xp22.2

**Summary:** This gene is a member of a gene family which arose through duplication on the X chromosome. The encoded protein may be localized to the nucleus as the protein contains several nuclear localization signals, and has similarity to a synaptonemal complex protein. [provided by RefSeq, Aug 2011]

**Product images:**



Coomassie blue staining of purified FAM9C protein (Cat# [TP322158]). The protein was produced from HEK293T cells transfected with FAM9C cDNA clone (Cat# [RC222158]) using MegaTran 2.0 (Cat# [TT210002]).