

## Product datasheet for PH322121

### CAMK2D (NM\_172128) Human Mass Spec Standard

#### Product data:

Product Type:	Mass Spec Standards
Description:	CAMK2D MS Standard C13 and N15-labeled recombinant protein (NP_742126)
Species:	Human
Expression Host:	HEK293
Expression cDNA Clone or AA Sequence:	RC222121
Predicted MW:	54.1 kDa
Protein Sequence:	>RC222121 protein sequence Red=Cloning site Green=Tags(s)

MASTTTCTRFTDEYQLFEELGKGAFSVVRRCKIPTGQEYAAKIINTKKLSARDHQKLEREARICRLLKH  
PNIVRLHDSISEEGFHYLVFDLVTGGELFEDIVAREYYSEADASHCIQQIILESVNHCHLNGIVHRDLKPE  
NLLASKSKGAAYKLADFGLAIEVQGDQAWFGFAGTPGYLSPEVLRKDPYKGPVDMWACGVILYILLVG  
YPPFWDEDQHRLYQQIKAGAYDFPSPEWDTVTPEAKDLINKMLTINPAKRITASEALKHPWICQRSTVAS  
MMHRQETVDCLKKFNARRKLGAILTTMLATRNFSAAKSLKKPDGVKESTESSNTTIEDEDVKARKQEI  
IKVTEQLIEAINNGDFEAYTKICDPGLTAFEPEALGNLVEGMDFHRFYFENALSKSNKPIHTIILNPHVH  
LVGDAAACIAYIRLTQYMDGSGMPKTMQSEETRVWHRRDGKWQNVHFHRSGSPTVPIK

TRTRPLEQKLISEEDLAANDILDYKDDDDKV

Tag:	C-Myc/DDK
Purity:	> 80% as determined by SDS-PAGE and Coomassie blue staining
Concentration:	>0.05 µg/µL as determined by microplate BCA method
Labeling Method:	Labeled with [U- <sup>13</sup> C <sub>6</sub> , <sup>15</sup> N <sub>4</sub> ]-L-Arginine and [U- <sup>13</sup> C <sub>6</sub> , <sup>15</sup> N <sub>2</sub> ]-L-Lysine
Buffer:	25 mM Tris-HCl, 100 mM glycine, pH 7.3
Storage:	Store at -80°C. Avoid repeated freeze-thaw cycles.
Stability:	Stable for 3 months from receipt of products under proper storage and handling conditions.
RefSeq:	<u><a href="#">NP_742126</a></u>
RefSeq Size:	5776
RefSeq ORF:	1434
Synonyms:	CAMKD



[View online »](#)

Locus ID: 817

UniProt ID: [Q13557](#), [A8MVS8](#)

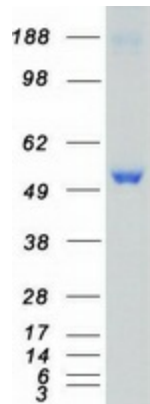
Cytogenetics: 4q26

**Summary:** The product of this gene belongs to the serine/threonine protein kinase family and to the Ca(2+)/calmodulin-dependent protein kinase subfamily. Calcium signaling is crucial for several aspects of plasticity at glutamatergic synapses. In mammalian cells, the enzyme is composed of four different chains: alpha, beta, gamma, and delta. The product of this gene is a delta chain. Alternative splicing results in multiple transcript variants encoding distinct isoforms. Distinct isoforms of this chain have different expression patterns.[provided by RefSeq, Nov 2008]

**Protein Families:** Druggable Genome, Protein Kinase

**Protein Pathways:** Calcium signaling pathway, ErbB signaling pathway, Glioma, GnRH signaling pathway, Long-term potentiation, Melanogenesis, Neurotrophin signaling pathway, Olfactory transduction, Oocyte meiosis, Wnt signaling pathway

### Product images:



Coomassie blue staining of purified CAMK2D protein (Cat# [TP322121]). The protein was produced from HEK293T cells transfected with CAMK2D cDNA clone (Cat# [RC222121]) using MegaTran 2.0 (Cat# [TT210002]).