

Product datasheet for PH322113

POLE2 (NM_002692) Human Mass Spec Standard

Product data:

Product Type:	Mass Spec Standards
Description:	POLE2 MS Standard C13 and N15-labeled recombinant protein (NP_002683)
Species:	Human
Expression Host:	HEK293
Expression cDNA Clone or AA Sequence:	RC222113
Predicted MW:	59.5 kDa
Protein Sequence:	>RC222113 protein sequence Red=Cloning site Green=Tags(s)

MAPERLRSRALSAFKLRGLLLRGEAIKYLTEALQSISELELEDKLEKIINAVEKQPLSSNMIERSVVEAA
VQECSSVDEETIEHVFNIIGAFDIPRFVYNSERKKFLPLLMTNHPAPNLFGTPRDKAEMFRERYTILHQR
THRHELFTPPVIGSHPDSESGSKFQLKTIETLLGSTTKIGDAIVLGMITQLKEGKFFLEDPTGTVQLDLK
AQFHSGLYTEACFVLAEGWFEDQVFHVNAFGFPPEPSSSTRAYYGNINFFGGPSNTSVKTSAKLKQLEE
ENKDAMFVFLSDVWLDQEVLEKLRIMFAGYSPAPPTCFILCGNFSSAPYGNQVQALKDSLKTLADIIC
EYVDIHQSSRFVFPDGPDPGFGSILPRPPLAESITNEFRQRPVFSVFTTNPRIQYCTQEITVFREDLV
NKMCRCNCRFPSSNLAIPNHFVKITILSQGHLTPLPLYVCPVYWAYDYALRVYPVDPDLLVIADKYDPFTTT
NTECLCINPGSFPRSGFSFKVFYPSNKTVEDSKLQGF

TRTRPLEQKLISEEDLAANDILDYKDDDDKV

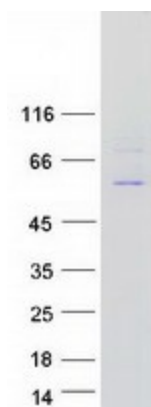
Tag:	C-Myc/DDK
Purity:	> 80% as determined by SDS-PAGE and Coomassie blue staining
Concentration:	>0.05 µg/µL as determined by microplate BCA method
Labeling Method:	Labeled with [U- ¹³ C ₆ , ¹⁵ N ₄]-L-Arginine and [U- ¹³ C ₆ , ¹⁵ N ₂]-L-Lysine
Buffer:	25 mM Tris-HCl, 100 mM glycine, pH 7.3
Storage:	Store at -80°C. Avoid repeated freeze-thaw cycles.
Stability:	Stable for 3 months from receipt of products under proper storage and handling conditions.
RefSeq:	NP_002683
RefSeq Size:	1861
RefSeq ORF:	1581



[View online »](#)

Synonyms:	DPE2
Locus ID:	5427
UniProt ID:	P56282
Cytogenetics:	14q21.3
Summary:	DNA polymerase epsilon, which is involved in DNA repair and replication, is composed of a large catalytic subunit and a small accessory subunit. The protein encoded by this gene represents the small subunit (B). Defects in this gene have been linked to colorectal cancer and to combined immunodeficiency. [provided by RefSeq, Jan 2017]
Protein Pathways:	Base excision repair, DNA replication, Metabolic pathways, Nucleotide excision repair, Purine metabolism, Pyrimidine metabolism

Product images:



Coomassie blue staining of purified POLE2 protein (Cat# [TP322113]). The protein was produced from HEK293T cells transfected with POLE2 cDNA clone (Cat# [RC222113]) using MegaTran 2.0 (Cat# [TT210002]).