

## Product datasheet for PH322104

### CCDC32 (NM\_052849) Human Mass Spec Standard

#### Product data:

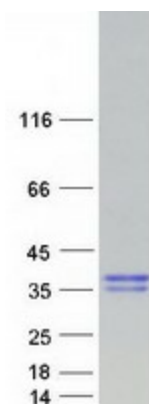
|                                       |  |
|---------------------------------------|--|
| Product Type:                         | Mass Spec Standards  |
| Description:                          | C15orf57 MS Standard C13 and N15-labeled recombinant protein (NP_443081)   |
| Species:                              | Human  |
| Expression Host:                      | HEK293   |
| Expression cDNA Clone or AA Sequence: | RC222104   |
| Predicted MW:                         | 20.5 kDa   |
| Protein Sequence:                     | >RC222104 representing NM_052849<br>Red=Cloning site Green=Tags(s)<br><br>MKMFESADSTATRSGQDLWAEICSLPNPEQEDGANNAFSDSFVDSCEGEGQREVADFAVQPAVKPWAP<br>LQDSEVYLASLEKLRRIKGLNQEVTSKDMLRTLAQAKKECWDRLFQEKLA SEFFVDGLDSESTLEHFK<br>RWLQPKVAVSTEEVQYLIPPESQVEKPVAEDEPAAGDKPAAAEQ<br><br>TRTRPLEQKLISEEDLAANDILDYKDDDDKV |
| Tag:                                  | C-Myc/DDK  |
| Purity:                               | > 80% as determined by SDS-PAGE and Coomassie blue staining  |
| Concentration:                        | >0.05 µg/µL as determined by microplate BCA method   |
| Labeling Method:                      | Labeled with [U- <sup>13</sup> C <sub>6</sub> , <sup>15</sup> N <sub>4</sub> ]-L-Arginine and [U- <sup>13</sup> C <sub>6</sub> , <sup>15</sup> N <sub>2</sub> ]-L-Lysine   |
| Buffer:                               | 25 mM Tris-HCl, 100 mM glycine, pH 7.3   |
| Storage:                              | Store at -80°C. Avoid repeated freeze-thaw cycles.   |
| Stability:                            | Stable for 3 months from receipt of products under proper storage and handling conditions.   |
| RefSeq:                               | <a href="#">NP_443081</a>  |
| RefSeq Size:                          | 1724   |
| RefSeq ORF:                           | 555  |
| Synonyms:                             | C15orf57   |
| Locus ID:                             | 90416  |
| UniProt ID:                           | <a href="#">Q9BV29</a> , <a href="#">A0A024R9J9</a>  |



[View online »](#)

Cytogenetics: 15q15.1

**Product images:**



Coomassie blue staining of purified CCDC32 protein (Cat# [TP322104]). The protein was produced from HEK293T cells transfected with CCDC32 cDNA clone (Cat# [RC222104]) using MegaTran 2.0 (Cat# [TT210002]).