

Product datasheet for PH322073

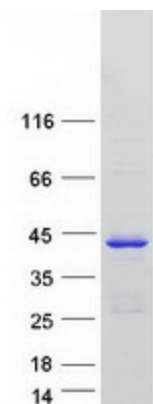
C1orf226 (NM_001085375) Human Mass Spec Standard

Product data:

| | |
|---------------------------------------|--|
| Product Type: | Mass Spec Standards |
| Description: | C1orf226 MS Standard C13 and N15-labeled recombinant protein (NP_001078844) |
| Species: | Human |
| Expression Host: | HEK293 |
| Expression cDNA Clone or AA Sequence: | RC222073 |
| Predicted MW: | 28.9 kDa |
| Protein Sequence: | >RC222073 representing NM_001085375 Red=Cloning site Green=Tags(s) MFENLNTALTPKLQASRSFPHLSKPVAPGSAPLGSPEGGPGPLWVGSSQHLKNLGKAMGAKVNDFLRRKE PSSLGSGVTEINKTAGAQLASGTDAAPEAWLEDERSVLQETFPRLDPPPIITRKRTPRALKTTQDMLIS SQPVLSSLEYGTEPSPGQAQDSAPTAQPDVPADASQPEATMEREERGKVLPNGEVLSVDPDLIHKDSQDE SKLKMTECRRASSPSLIERNGFKLSLSPISLAESWEDGSPPPQARTSSLDNEGPHPDLLSFE TRTRPLEQKLI SEEDLAANDILDYKDDDDKV |
| Tag: | C-Myc/DDK |
| Purity: | > 80% as determined by SDS-PAGE and Coomassie blue staining |
| Concentration: | >0.05 µg/µL as determined by microplate BCA method |
| Labeling Method: | Labeled with [U- ¹³ C ₆ , ¹⁵ N ₄]-L-Arginine and [U- ¹³ C ₆ , ¹⁵ N ₂]-L-Lysine |
| Buffer: | 25 mM Tris-HCl, 100 mM glycine, pH 7.3 |
| Storage: | Store at -80°C. Avoid repeated freeze-thaw cycles. |
| Stability: | Stable for 3 months from receipt of products under proper storage and handling conditions. |
| RefSeq: | NP_001078844 |
| RefSeq Size: | 4146 |
| RefSeq ORF: | 816 |
| Locus ID: | 400793 |
| UniProt ID: | A1L170 |
| Cytogenetics: | 1q23.3 |



[View online »](#)

Product images:

Coomassie blue staining of purified C1orf226 protein (Cat# [TP322073]). The protein was produced from HEK293T cells transfected with C1orf226 cDNA clone (Cat# [RC222073]) using MegaTran 2.0 (Cat# [TT210002]).