

## Product datasheet for PH322058

### SLC34A3 (NM\_080877) Human Mass Spec Standard

#### Product data:

Product Type:	Mass Spec Standards
Description:	SLC34A3 MS Standard C13 and N15-labeled recombinant protein (NP_543153)
Species:	Human
Expression Host:	HEK293
Expression cDNA Clone or AA Sequence:	RC222058
Predicted MW:	63.3 kDa
Protein Sequence:	>RC222058 representing NM_080877 Red=Cloning site Green=Tags(s)

MPSSLPGSQVPHPTLDAVDLVEKTLRNEGTSAPVLEEGLDTPWTLPQLKDTSPWKELRVAGRLRRVA  
GSVLKACGLLGSLYFFICSLDVLSSAFQLLGSKVAGDIFKDNVVLNPVAGLVIGVLVTALVQSSSTSSS  
IVVSMVAAKLLTVRVSVPIIMGVNVGTSITSTLVSMASQSGRDEFQRAFSGSAVHGIFNWLTVLVLLPLE  
SATALLERLSELALGAASLTPRAQAPDILKVLTKPLTHLIVQLSDMIMSSATGNATNSSLIKHWCGTTG  
QPTQENSSCGAFGPCTEKNSTAPADRLPCRHLFAGTELTDLAVGCILLAGSLLVLCGCLVIVKLLNSVL  
RGRVAQVVRTVINADFPFPLGWLGGYLAFLAGLTFALQSSSVFTAADVPLMGVGVISLDRAYPLLLGS  
NIGTTTTALLAALASPDRMLSALQVALIHFFNLAGILLWYLPALRLPIPLARHFGVVTARYRWVAGV  
YLLLGLLLLPLAAFGLSLAGMVLAAVGGPLVGLVLLVILVTVLQRRRPWLPVRLRSWAWLPVWLHSLE  
PWDRLVTRCCPCNVCSPPKATTKEAYCYENPEILASQQL

TRTRPLEQKLI SEEDLAANDILDYKDDDDKV

Tag:	C-Myc/DDK
Purity:	> 80% as determined by SDS-PAGE and Coomassie blue staining
Concentration:	>0.05 µg/µL as determined by microplate BCA method
Labeling Method:	Labeled with [U- <sup>13</sup> C <sub>6</sub> , <sup>15</sup> N <sub>4</sub> ]-L-Arginine and [U- <sup>13</sup> C <sub>6</sub> , <sup>15</sup> N <sub>2</sub> ]-L-Lysine
Buffer:	25 mM Tris-HCl, 100 mM glycine, pH 7.3
Storage:	Store at -80°C. Avoid repeated freeze-thaw cycles.
Stability:	Stable for 3 months from receipt of products under proper storage and handling conditions.
RefSeq:	<a href="#">NP_543153</a>
RefSeq Size:	2124
RefSeq ORF:	1797



[View online »](#)

**Synonyms:** HHRH; NPTI1c

**Locus ID:** 142680

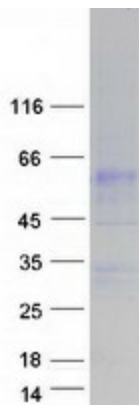
**UniProt ID:** [Q8N130](#)

**Cytogenetics:** 9q34.3

**Summary:** This gene encodes a member of SLC34A transporter family of proteins, and is expressed primarily in the kidney. It is involved in transporting phosphate into cells via sodium cotransport in the renal brush border membrane, and contributes to the maintenance of inorganic phosphate concentration in the kidney. Mutations in this gene are associated with hereditary hypophosphatemic rickets with hypercalciuria. Alternatively spliced transcript variants varying in the 5' UTR have been found for this gene.[provided by RefSeq, Apr 2010]

**Protein Families:** Transmembrane

### Product images:



Coomassie blue staining of purified SLC34A3 protein (Cat# [TP322058]). The protein was produced from HEK293T cells transfected with SLC34A3 cDNA clone (Cat# [RC222058]) using MegaTran 2.0 (Cat# [TT210002]).