

Product datasheet for PH322057

Plexin A1 (PLXNA1) (NM_032242) Human Mass Spec Standard

Product data:

Product Type:	Mass Spec Standards
Description:	PLXNA1 MS Standard C13 and N15-labeled recombinant protein (NP_115618)
Species:	Human
Expression Host:	HEK293
Expression cDNA Clone or AA Sequence:	RC222057
Predicted MW:	211.1 kDa



[View online »](#)

Protein Sequence: >RC222057 representing NM_032242
 Red=Cloning site Green=Tags(s)

MPLPPRSLQVLLLLLLLLLLLLLPGMWAEAGLPRAGGGSQPPFRFASASDWGLTHL VVHEQTGEVYVAVNR
 IYKLSGNLTLRAHVTGPVEDNEKCYPPPSVQSCPHGLGSTDNVNKL LLLDYAANRLACGSASQGICQF
 LRLDDL FKLGEPHHRKEHYLSSVQEAGSMAGVLIAGPPGQGQAKL FVGTPIDGKSEYFPTLSSRRLMANE
 EDADMFGFVYQDEFVSSQLKIPSDTL SKFPAFDIYVYVYFRSEQFVYYLTLQLDTQLTSPDAAGEHFFTS
 KIVRLCVDDPKFYSYVEFPIGCEQAGVEYRLVQDAYLSRPGRALAHQLGLAEDEDVLFVFAQQGQKNRVK
 PPKESALCLFTLRAIKEKIKERIQCSCYRGEKLSL PWLLNKEKGCINSPLQIDDDFCGQDFNQPLGGTVT
 IEGTPLFVDKDDGLTAVAAVDYRGRVTVFAGTRSGRIRKILVDLSNPGGRPALAYESVVAQEGSPILRDL
 VLSPNHQYL YAMTEKQVTRVPVESCQYTSCELCGSRDPHCWCVLHSICSRDADEREPQRF AADL
 LQCQVLT VQPRNVSVTMSQVPLVLQAWNVPDL SAGVNCSEDFTESESVLEDGRIHCRSPSAREVAPITR
 GQGDQRVVKLYL KSKETGKFFASVDFVYNCVSHQSCLSCVNGSFPCHWKYRHVCTHNVADCAFLEGRV
 NVSEDCPQILPSTQIYVPVGVVPI TL AARNLPQPQSGQRYECLFHIPGSPARV T ALRFNSSSLQCQNS
 SYSYEGNDVSDLPVNL SVVWNGNFVIDNPQNIQAHL YKCPALRESCGLCLKADPRFECGWCVAERRCSLR
 HHCADTPASWMHARHGSSRCTDPKILKLPETGPRQGGTRLIT GENLGLRFEDVRLGVRVGVKVL CSPV
 ESEYISAEQIVCEIGDASSVRAHDALVEVCVRDCSPHYRALSPKRFTFVTPTFYRVSPSRGPLSGGTWIG
 IEGSHLNAGSDVAVSVGGRPCSFSWRNSREIRCLTPPGQSPGSAPIIININRAQLTNPEVKYNYTEDPTI
 LRIDPEWSINSGGTLTVTGTNLATVREPRIRAKYGGIERENGCLVYNDTTMVCRAPSVANPVRSPPELG
 ERPDELGFVMDNVRSLVLN NSTSFLYYPDPVLEPLSPTGLLELKPSSPLILKGRNLLPPAPGNSRLNYTV
 LIGSTPCTLTVSETQLLCEAPNL TGQHKVTVRAGGFESPGTLQVYSDSLLTLP AIVGIGGGGGLLLVI
 VAVLIA YKRKSRDADRTLKRLQLQMDNLESRVALECKEAF AELQTDIHEL TNDLDGAGIPFLDYRTYAMR
 VLFPGIEDHPVLKEMEYQANVEKSLT LFGQLTKKHFLTF IRTLEAQRFSMRDRGNVASLIMTALQGE
 MEYATGVLQQLSDLIEKNLESKNHPKLLLRRTESVAEKMLTNWFTFLLYKFLKECAGEPLFMYCAIKQ
 QMEKGPIDAITGEARYSLSEDKLIRQQIDYKTLTLNVCVNPENENAPEVPVKGLDCDVTQAKEKLLDAAY
 KGVPYSQRPKAADMDLEWRQGRMARIILQDEDVTTKIDNDWKRLNLAHYQVTDGSSVALVPKQTSAYNI
 SNSSTFTKSLSRYESMLRTASSPDSLRSRTPMITPDLESGTKLWHLVKNHHDLDQREGDRGSKMVSEIYL
 TRLLATKGT LQKFVDDL FETIFSTAHRSALPLAIKYMDFLDEQADKHQIHDADRHTWKSNCPLRFW
 VNVIKNPQFVFDIHKNSITDACLSVVAQTFMDCSSTSEHKLGKDSPSNKL LYAKDIPNYKSWVERYADI
 AKMPAISDQMSAYLAEQSRLHLSQFNMSALHEIYSYITKYKDEILAAL EKDEQARRQLRSKLEQVVD
 TMLSS

TRTRPLEQKLISEEDLAANDILDYKDDDDKV

Tag: C-Myc/DDK

Purity: > 80% as determined by SDS-PAGE and Coomassie blue staining

Concentration: >0.05 µg/µL as determined by microplate BCA method

Labeling Method: Labeled with [U- 13C6, 15N4]-L-Arginine and [U- 13C6, 15N2]-L-Lysine

Buffer: 25 mM Tris-HCl, 100 mM glycine, pH 7.3

Storage: Store at -80°C. Avoid repeated freeze-thaw cycles.

Stability: Stable for 3 months from receipt of products under proper storage and handling conditions.

RefSeq: [NP_115618](#)

RefSeq Size: 9071

RefSeq ORF: 5688

Synonyms: NOV; NOV; PLEXIN-A1; PLXN1

Locus ID: 5361

UniProt ID: [Q9UIW2](#)

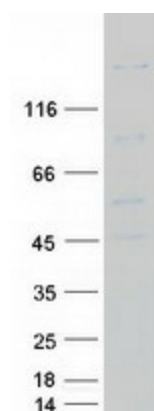
Cytogenetics: 3q21.3

Summary: Coreceptor for SEMA3A, SEMA3C, SEMA3F and SEMA6D. Necessary for signaling by class 3 semaphorins and subsequent remodeling of the cytoskeleton. Plays a role in axon guidance, invasive growth and cell migration. Class 3 semaphorins bind to a complex composed of a neuropilin and a plexin. The plexin modulates the affinity of the complex for specific semaphorins, and its cytoplasmic domain is required for the activation of down-stream signaling events in the cytoplasm (By similarity).[UniProtKB/Swiss-Prot Function]

Protein Families: Druggable Genome, Transmembrane

Protein Pathways: Axon guidance

Product images:



Coomassie blue staining of purified PLXNA1 protein (Cat# [TP322057]). The protein was produced from HEK293T cells transfected with PLXNA1 cDNA clone (Cat# [RC222057]) using MegaTran 2.0 (Cat# [TT210002]).