

## Product datasheet for PH322038

### SUN2 (NM\_015374) Human Mass Spec Standard

#### Product data:

Product Type:	Mass Spec Standards
Description:	SUN2 MS Standard C13 and N15-labeled recombinant protein (NP_056189)
Species:	Human
Expression Host:	HEK293
Expression cDNA Clone or AA Sequence:	RC222038
Predicted MW:	80.1 kDa
Protein Sequence:	>RC222038 representing NM_015374 Red=Cloning site Green=Tags(s)
	MSRRSQRLTRYSGDDDDGSSSSGGSSVAGSQSTLFDKDSPLRRLKTKSSNMKRLSPAPQLGPSSDAHTSY SESLVHESWFPFRSSLEELHGDANWGEDLRVRRRRGTGGSESSRASGLVGRKATEDFLGSSSGYSSSEDDY VGYSVDVQSSSSRLRSAYSRAGSLLWMVATSPGRLFRLLYWWAGTTWYRLTTAASLLDVFVLTTRFSSL KTFLWFLPLLLLLTCLTYGAWFYYPYGLQTFHPALVSWWAAKDSRRPDEGWEARDSSPHFQAEQVRMSRV HSLERRLEALAAEFSSNWQKEAMRLERLELRQGAPGGGGGLSHEDTLALLEGLVSRREALKEDFRRE TAARIQEEL SALRAEHQDSEDLFKKIVRASQSEARIQQLKSEWQSMQESFQESSVKELRRLEDQLAG LQQELAALALKQSSVAEEVGLLPQIQAVRDDVESQFPWISQFLARGGGGRVGLLQREEMQAQLRELES KILTHVAEMQGSAREAAASLTLQKEGVIQVTEEQVHHIVKQALQRYSEDRIGLADYALESGGASVIS TRCSETYETKTALLSLFGIPLWYHSQSPRVILQPDVHPGNCWAFQGPQGF AVVRLSARIRPTAVTLEHVP KALSPNSTISSAPKDFAI FGFDEDLQEGTLLGKFTYDQDGEPIQTFHFQAPTMATYQVVELRILTNWGH PEYTCIYRFRVHGEPAH
	TRTRPLEQKLISEEDLAANDILDYKDDDDKV
Tag:	C-Myc/DDK
Purity:	> 80% as determined by SDS-PAGE and Coomassie blue staining
Concentration:	>0.05 µg/µL as determined by microplate BCA method
Labeling Method:	Labeled with [U- 13C6, 15N4]-L-Arginine and [U- 13C6, 15N2]-L-Lysine
Buffer:	25 mM Tris-HCl, 100 mM glycine, pH 7.3
Storage:	Store at -80°C. Avoid repeated freeze-thaw cycles.
Stability:	Stable for 3 months from receipt of products under proper storage and handling conditions.
RefSeq:	<u><a href="#">NP_056189</a></u>



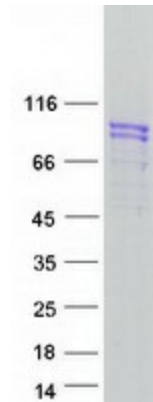
[View online »](#)

RefSeq Size:	3908
RefSeq ORF:	2151
Synonyms:	UNC84B
Locus ID:	25777
UniProt ID:	<a href="#">Q9UH99</a> , <a href="#">A0A024R1P7</a> , <a href="#">B4E2A6</a>
Cytogenetics:	22q13.1

**Summary:** SUN1 (MIM 607723) and SUN2 are inner nuclear membrane (INM) proteins that play a major role in nuclear-cytoplasmic connection by formation of a 'bridge' across the nuclear envelope, known as the LINC complex, via interaction with the conserved luminal KASH domain of nesprins (e.g., SYNE1; MIM 608441) located in the outer nuclear membrane (ONM). The LINC complex provides a direct connection between the nuclear lamina and the cytoskeleton, which contributes to nuclear positioning and cellular rigidity (summary by Haque et al., 2010 [PubMed 19933576]).[supplied by OMIM, Nov 2010]

**Protein Families:** Transmembrane

### Product images:



Coomassie blue staining of purified SUN2 protein (Cat# [TP322038]). The protein was produced from HEK293T cells transfected with SUN2 cDNA clone (Cat# [RC222038]) using MegaTran 2.0 (Cat# [TT210002]).