

Product datasheet for PH322021

ELMO2 (NM_182764) Human Mass Spec Standard

Product data:

Product Type:	Mass Spec Standards
Description:	ELMO2 MS Standard C13 and N15-labeled recombinant protein (NP_877496)
Species:	Human
Expression Host:	HEK293
Expression cDNA Clone or AA Sequence:	RC222021
Predicted MW:	82.4 kDa
Protein Sequence:	>RC222021 representing NM_182764 Red=Cloning site Green=Tags(s)

MPPPSDIVKVAIEWPGANAQLLEIDQKRPLASIIKEVCDGWSLPNPEYYTLRYADGPQLYITEQTRSDIK
NGTILQLAISPSRAARQLMERTQSSNMETRLDAMKELAKLSADVTFATEFINMDGIIIVLTRLVESGKLL
SHYSEMLAFTLTAFLELMDHGIVSWDMVSITFIKQIAGYVSQPMVDVSILQRSLAILESMLNSQSLYQK
IAEEITVGQLISHLQVSNQEIQTYAIALINALFLKAPEDKRQDMANAFQKHLRSIILNHVIRGNRPIKT
EMAHQLYVLQVLTFNLLLEERMMTKMDPNDQAQRDIIFELRRIAFDAESDPSNAPGSGTEKRKAMYTKDYK
MLGFTNHINPAMDFTQTPPGMLALDNMLYLAKVHQDTYIRIVLENSREDKHECFGRSAIELTKMLCEI
LQVGELPNEGRNDYHPMFFTHDRAFEELFGICIQLLNKTWKEMRATAEDFNKVMQVVREQITRALPSKPN
SLDQFKSKLRSLSYSEILRLRQSERMSQDFQSPPIVELREKIQPEILELIKQQLNRLCEGSSFRKIGN
RRRQERFWYCRALALNHKVLHYGDLDDNPQGEVTFESLQEKIIPVADIKAIIVTGKDCPHMKEKSALKQNKEY
LELAFSILYDPDETLNFIAPNKYEYCIWIDGLSALLGKDMSELTKSDLDTLLSMEMKLRLLDLENIQIP
EAPPPIPKEPSSYDFVYHYG

TRTRPLEQKLISEEDLAANDILDYKDDDDKV

Tag:	C-Myc/DDK
Purity:	> 80% as determined by SDS-PAGE and Coomassie blue staining
Concentration:	>0.05 µg/µL as determined by microplate BCA method
Labeling Method:	Labeled with [U- 13C6, 15N4]-L-Arginine and [U- 13C6, 15N2]-L-Lysine
Buffer:	25 mM Tris-HCl, 100 mM glycine, pH 7.3
Storage:	Store at -80°C. Avoid repeated freeze-thaw cycles.
Stability:	Stable for 3 months from receipt of products under proper storage and handling conditions.
RefSeq:	NP_877496

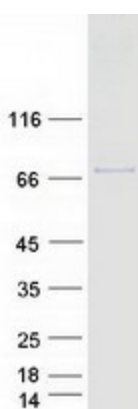


[View online »](#)

RefSeq Size:	3596
RefSeq ORF:	2160
Synonyms:	CED-12; Ced-12A; CED12; ELMO-2; VMPI
Locus ID:	63916
UniProt ID:	Q96JJ3
Cytogenetics:	20q13.12

Summary: The protein encoded by this gene interacts with the dedicator of cyto-kinesis 1 protein. Similarity to a *C. elegans* protein suggests that this protein may function in phagocytosis of apoptotic cells and in cell migration. Alternative splicing results in multiple transcript variants. [provided by RefSeq, Dec 2015]

Product images:



Coomassie blue staining of purified ELMO2 protein (Cat# [TP322021]). The protein was produced from HEK293T cells transfected with ELMO2 cDNA clone (Cat# [RC222021]) using MegaTran 2.0 (Cat# [TT210002]).