

Product datasheet for PH322012

SHARPIN (NM_030974) Human Mass Spec Standard

Product data:

Product Type:	Mass Spec Standards
Description:	SHARPIN MS Standard C13 and N15-labeled recombinant protein (NP_112236)
Species:	Human
Expression Host:	HEK293
Expression cDNA Clone or AA Sequence:	RC222012
Predicted MW:	39.8 kDa
Protein Sequence:	>RC222012 representing NM_030974 Red=Cloning site Green=Tags(s) MAPPAGGAAAAASDLGSAVLLAVHA AVRPLGAGPDAE AQLRRLQLSADPERPGRFRLELLGAGPGAVNL EWPLESVSYTIRGPTQHELQPPPGPGTSLHFLNPQEAQRWAVLVRGATVEGQNGSKSNSPPALGPEAC PVSLPSPPEASTLKGGPPPEADLPRSPGNLTEREELAGSLARAIAGGDEKGAQVAAVLAQHRVALSVQLQ EACFPPIRLQVTLEDAASAASAASSAHVALQVHPHCTVAALQEQVSELGFPPAVQRWVIGRCLCVPE RSLASYGVRQDGDPAFLYLLSAPREAPATGSPQHPQKMDGELGRLFPPSLGLPPGPQPAASSLPSPLQP SWSCPSTFINAPDRPGCEMCSTQRPCTWDPLAAAST TRTRPLEQKLI SEEDLAANDILDYKDDDDKV
Tag:	C-Myc/DDK
Purity:	> 80% as determined by SDS-PAGE and Coomassie blue staining
Concentration:	>0.05 µg/µL as determined by microplate BCA method
Labeling Method:	Labeled with [U- ¹³ C ₆ , ¹⁵ N ₄]-L-Arginine and [U- ¹³ C ₆ , ¹⁵ N ₂]-L-Lysine
Buffer:	25 mM Tris-HCl, 100 mM glycine, pH 7.3
Storage:	Store at -80°C. Avoid repeated freeze-thaw cycles.
Stability:	Stable for 3 months from receipt of products under proper storage and handling conditions.
RefSeq:	<u>NP_112236</u>
RefSeq Size:	1765
RefSeq ORF:	1161
Synonyms:	SIPL1
Locus ID:	81858



[View online »](#)

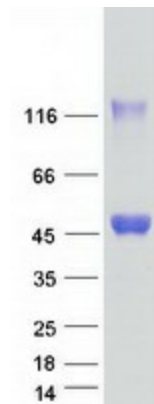
UniProt ID: [Q9H0F6](#), [Q6PJD5](#)

Cytogenetics: 8q24.3

Summary: Component of the LUBAC complex which conjugates linear polyubiquitin chains in a head-to-tail manner to substrates and plays a key role in NF-kappa-B activation and regulation of inflammation. LUBAC conjugates linear polyubiquitin to IKBKG and RIPK1 and is involved in activation of the canonical NF-kappa-B and the JNK signaling pathways. Linear ubiquitination mediated by the LUBAC complex interferes with TNF-induced cell death and thereby prevents inflammation. LUBAC is recruited to the TNF-R1 signaling complex (TNF-RSC) following polyubiquitination of TNF-RSC components by BIRC2 and/or BIRC3 and to conjugate linear polyubiquitin to IKBKG and possibly other components contributing to the stability of the complex. Together with OTULIN, the LUBAC complex regulates the canonical Wnt signaling during angiogenesis.[UniProtKB/Swiss-Prot Function]

Protein Families: Druggable Genome

Product images:



Coomassie blue staining of purified SHARPIN protein (Cat# [TP322012]). The protein was produced from HEK293T cells transfected with SHARPIN cDNA clone (Cat# [RC222012]) using MegaTran 2.0 (Cat# [TT210002]).