

## Product datasheet for PH322002

### CHMP4A (NM\_014169) Human Mass Spec Standard

#### Product data:

Product Type:	Mass Spec Standards
Description:	CHMP4A MS Standard C13 and N15-labeled recombinant protein (NP_054888)
Species:	Human
Expression Host:	HEK293
Expression cDNA Clone or AA Sequence:	RC222002
Predicted MW:	29.8 kDa
Protein Sequence:	>RC222002 protein sequence Red=Cloning site Green=Tags(s)  MSRRRPEDGLGKAGPCVMRHPPRSKAEVWRTL RGGGGRGELAMSGLGR LFGKGGKKEKGPTPEEAIQK LK ETEKILIKKQEFLEQKIQQELQTAKKYGTKNKRAALQALRRKKRFEQQLAQTDGTLSTLEFQREAIENAT TNAEVLRTMELAAQSMKKAYQDMDIDKVDLMTDITEQQEVAQQISDAISRPMGFDDVDEDELLEEL LEQEELAQELLNVGDKEEESVKLPSVPSTHLPAGPAPKVDDEEALKQLAEWVS  TRTRPLEQKLI SEEDLAANDILDYKDDDDKV
Tag:	C-Myc/DDK
Purity:	> 80% as determined by SDS-PAGE and Coomassie blue staining
Concentration:	>0.05 µg/µL as determined by microplate BCA method
Labeling Method:	Labeled with [U- <sup>13</sup> C <sub>6</sub> , <sup>15</sup> N <sub>4</sub> ]-L-Arginine and [U- <sup>13</sup> C <sub>6</sub> , <sup>15</sup> N <sub>2</sub> ]-L-Lysine
Buffer:	25 mM Tris-HCl, 100 mM glycine, pH 7.3
Storage:	Store at -80°C. Avoid repeated freeze-thaw cycles.
Stability:	Stable for 3 months from receipt of products under proper storage and handling conditions.
RefSeq:	<a href="#">NP_054888</a>
RefSeq Size:	1372
RefSeq ORF:	795
Synonyms:	C14orf123; CHMP4; CHMP4B; HSPC134; SHAX2; SNF7; SNF7-1; VPS32-1; VPS32A
Locus ID:	29082
UniProt ID:	<a href="#">Q9BY43</a> , <a href="#">Q14D22</a>



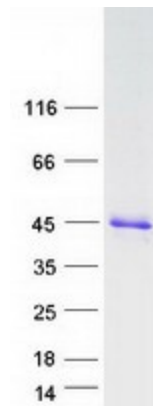
[View online »](#)

Cytogenetics: 14q12

**Summary:** CHMP4A belongs to the chromatin-modifying protein/charged multivesicular body protein (CHMP) family. These proteins are components of ESCRT-III (endosomal sorting complex required for transport III), a complex involved in degradation of surface receptor proteins and formation of endocytic multivesicular bodies (MVBs). Some CHMPs have both nuclear and cytoplasmic/vesicular distributions, and one such CHMP, CHMP1A (MIM 164010), is required for both MVB formation and regulation of cell cycle progression (Tsang et al., 2006 [PubMed 16730941]).[supplied by OMIM, Mar 2008]

**Protein Pathways:** Endocytosis

### Product images:



Coomassie blue staining of purified CHMP4A protein (Cat# [TP322002]). The protein was produced from HEK293T cells transfected with CHMP4A cDNA clone (Cat# [RC222002]) using MegaTran 2.0 (Cat# [TT210002]).