

Product datasheet for PH321996

Repulsive Guidance Molecule A (RGMA) (NM_020211) Human Mass Spec Standard

Product data:

Product Type:	Mass Spec Standards
Description:	RGMA MS Standard C13 and N15-labeled recombinant protein (NP_064596)
Species:	Human
Expression Host:	HEK293
Expression cDNA Clone or AA Sequence:	RC221996
Predicted MW:	49.2 kDa
Protein Sequence:	>RC221996 representing NM_020211 Red=Cloning site Green=Tags(s)

MQPPRERLVVTGRAGWMGMGRGAGRSALGFWPTLAFLLCSFPAATSPCKILKCNSEFWSATSGSHAPASD
DTPEFCAALRSYALCTRRTARTCRGDLAYHSAVHGIEDLMSQHNSKDGPTSQPRLRTLPPAGDSQERSD
SPEICHYEKSFHKHSATPNYTHCGLFGDPHLRTFTDRFQTCVKVQGAWPLIDNNYLNQVNTNPVLPGSAA
TATSKLTIIFKNFQECVDQKVYQAEMDELPAAFVDGSKNGGDKHGANSKITEKVSQGHVEIQAKYIGTT
IVVRQVGRYLTFAVRMPEEVVNAVEDWDSQGLYLCLRGCPNLQQIDFQAFHTNAEGTGARRLAAASPAPT
APETFPYETAFAKCKEKLPEVDL YYQACVFDLLTTGDVNF TLAAYYAL EDVKMLHSNKDKLHLYERTRDL
PGRAAAGLPLAPRPLL GALVPLLALLPVFCSGP

SGP TRRRLEQKLISEEDLAANDILDYKDDDDKV

Tag:	C-Myc/DDK
Purity:	> 80% as determined by SDS-PAGE and Coomassie blue staining
Concentration:	>0.05 µg/µL as determined by microplate BCA method
Labeling Method:	Labeled with [U- ¹³ C ₆ , ¹⁵ N ₄]-L-Arginine and [U- ¹³ C ₆ , ¹⁵ N ₂]-L-Lysine
Buffer:	25 mM Tris-HCl, 100 mM glycine, pH 7.3
Storage:	Store at -80°C. Avoid repeated freeze-thaw cycles.
Stability:	Stable for 3 months from receipt of products under proper storage and handling conditions.
RefSeq:	NP_064596
RefSeq Size:	3216
RefSeq ORF:	1359
Synonyms:	RGM



[View online »](#)

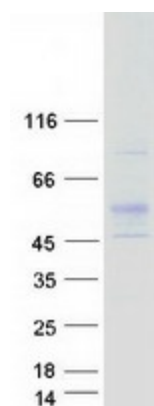
Locus ID: 56963

UniProt ID: [Q96B86](#)

Cytogenetics: 15q26.1

Summary: This gene encodes a member of the repulsive guidance molecule family. The encoded protein is a glycosylphosphatidylinositol-anchored glycoprotein that functions as an axon guidance protein in the developing and adult central nervous system. This protein may also function as a tumor suppressor in some cancers. Alternate splicing results in multiple transcript variants. [provided by RefSeq, Oct 2009]

Product images:



Coomassie blue staining of purified RGMA protein (Cat# [TP321996]). The protein was produced from HEK293T cells transfected with RGMA cDNA clone (Cat# [RC221996]) using MegaTran 2.0 (Cat# [TT210002]).