

## Product datasheet for PH321960

### TMEM181 (NM\_020823) Human Mass Spec Standard

#### Product data:

Product Type:	Mass Spec Standards
Description:	TMEM181 MS Standard C13 and N15-labeled recombinant protein (NP_065874)
Species:	Human
Expression Host:	HEK293
Expression cDNA Clone or AA Sequence:	RC221960
Predicted MW:	69.1 kDa
Protein Sequence:	>RC221960 representing NM_020823 Red=Cloning site Green=Tags(s)

MGAAPSPTQASSRGGGPPAPTRAVSSSSSRARGGALSALGSPARPLTTSPAPPPRSRPARQQDPQ  
CWEKRGAGGDTKGAAGPGGRLRGMDAEPAPFEPPLCSELKHLCRRLREAYRELKEDLTPFKDDRYR  
LAPMRLYTLKRHFVLFVVFVFCFGLTIFVGIKPKVIQTSAANFSLNNSKCLKPIQILSNPLSTYNQQ  
LWLTVCVELDQSKETSIKTSFPMTVKVDGVAQDGTMYIHNKVHNRTRTLTCAGKCAEIIVAHLGYLNYT  
QYTVIVGFEHLKLPKGMNFTWKTYNPAFSRLEIWFRRFFVVLTFIVTCLFAHSLRKFMRDWGIEQKWM  
SVLLPLLLLNDPFFPLSFLVNSWLPGLMDDLQSMFLCALLLFWLCVYHGIRVQGERKCLTFYLPKFFI  
VGLLWLASVTLGIWQTVNELHDPYQYRVDGTFQGMKVFMMVAAVYILYLLFLIVRACSELRHMPYVD  
LRLKFLTALTFVVLVISIAILYLRFGAQLQDNFVAELSTHYQNSAEFLSFYGLLNFYLYLAFVYSPSK  
NALYESQLKDNPAFMSLNDSDDDVIYGSDEEMPLQNGQAIRAKYKEESDSD

TRTRPLEQKLISEEDLAANDILDYKDDDDKV

Tag:	C-Myc/DDK
Purity:	> 80% as determined by SDS-PAGE and Coomassie blue staining
Concentration:	>0.05 µg/µL as determined by microplate BCA method
Labeling Method:	Labeled with [U- <sup>13</sup> C <sub>6</sub> , <sup>15</sup> N <sub>4</sub> ]-L-Arginine and [U- <sup>13</sup> C <sub>6</sub> , <sup>15</sup> N <sub>2</sub> ]-L-Lysine
Buffer:	25 mM Tris-HCl, 100 mM glycine, pH 7.3
Storage:	Store at -80°C. Avoid repeated freeze-thaw cycles.
Stability:	Stable for 3 months from receipt of products under proper storage and handling conditions.
RefSeq:	<a href="#">NP_065874</a>
RefSeq Size:	5397
RefSeq ORF:	1836



[View online »](#)

**Synonyms:** GPR178; KIAA1423

**Locus ID:** 57583

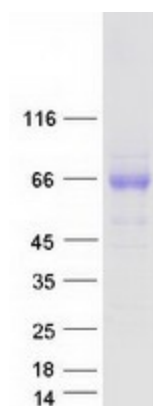
**UniProt ID:** [Q9P2C4](#)

**Cytogenetics:** 6q25.3

**Summary:** The TMEM181 gene encodes a putative G protein-coupled receptor expressed on the cell surface (Carette et al., 2009 [PubMed 19965467]; Wollscheid et al., 2009 [PubMed 19349973]). [supplied by OMIM, Jan 2010]

**Protein Families:** Transmembrane

### Product images:



Coomassie blue staining of purified TMEM181 protein (Cat# [TP321960]). The protein was produced from HEK293T cells transfected with TMEM181 cDNA clone (Cat# [RC221960]) using MegaTran 2.0 (Cat# [TT210002]).