

## Product datasheet for PH321947

### CPLX2 (NM\_001008220) Human Mass Spec Standard

#### Product data:

Product Type:	Mass Spec Standards
Description:	CPLX2 MS Standard C13 and N15-labeled recombinant protein (NP_001008221)
Species:	Human
Expression Host:	HEK293
Expression cDNA Clone or AA Sequence:	RC221947
Predicted MW:	15.4 kDa
Protein Sequence:	>RC221947 protein sequence Red=Cloning site Green=Tags(s)  MDFVMKQALGGATKDMGKMLGGEEKDPDAQKKEEERQEALRQQEEERKAKHARMEAREKVRQQIRDKY GLKKKEEKEAEEKAALQPCGSLTRPKKAIPAGCGDEEEEEESILDVTLKYLPGPLQDMFKK  TRTRPLEQKLISEEDLAANDILDYKDDDDKV
Tag:	C-Myc/DDK
Purity:	> 80% as determined by SDS-PAGE and Coomassie blue staining
Concentration:	>0.05 µg/µL as determined by microplate BCA method
Labeling Method:	Labeled with [U- 13C6, 15N4]-L-Arginine and [U- 13C6, 15N2]-L-Lysine
Buffer:	25 mM Tris-HCl, 100 mM glycine, pH 7.3
Storage:	Store at -80°C. Avoid repeated freeze-thaw cycles.
Stability:	Stable for 3 months from receipt of products under proper storage and handling conditions.
RefSeq:	<a href="#">NP_001008221</a>
RefSeq Size:	4676
RefSeq ORF:	402
Synonyms:	921-L; CPX-2; CPX2; Hfb1
Locus ID:	10814
UniProt ID:	<a href="#">Q6PUV4</a>
Cytogenetics:	5q35.2



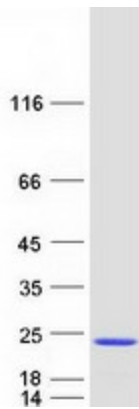
[View online »](#)

**Summary:**

Proteins encoded by the complexin/synaphin gene family are cytosolic proteins that function in synaptic vesicle exocytosis. These proteins bind syntaxin, part of the SNAP receptor. The protein product of this gene binds to the SNAP receptor complex and disrupts it, allowing transmitter release. Two transcript variants encoding the same protein have been found for this gene. [provided by RefSeq, Jul 2008]

**Protein Families:**

Druggable Genome

**Product images:**

Coomassie blue staining of purified CPLX2 protein (Cat# [TP321947]). The protein was produced from HEK293T cells transfected with CPLX2 cDNA clone (Cat# [RC221947]) using MegaTran 2.0 (Cat# [TT210002]).