

Product datasheet for PH321935

MBD3L2 (NM_144614) Human Mass Spec Standard

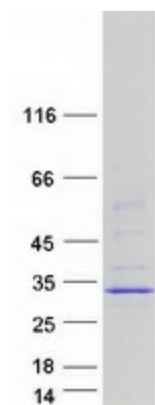
Product data:

Product Type:	Mass Spec Standards
Description:	MBD3L2 MS Standard C13 and N15-labeled recombinant protein (NP_653215)
Species:	Human
Expression Host:	HEK293
Expression cDNA Clone or AA Sequence:	RC221935
Predicted MW:	22.8 kDa
Protein Sequence:	<p>>RC221935 representing NM_144614</p> <p>Red=Cloning site Green=Tags(s)</p> <p>MGEPAFTSFPSLPVLGKLRNMPWALQKKREIHMAKAHRRRAARSALPMRLTSCIFRRPVTRIRSHPDN QVRRRKGDHLEKPPQLCAYRRLQALQPCSSQGEQSSPLHLESVLSILAPGTAGESLDRAGAERVRSPL PTPGRFPAVAGGPTPGMGCLPPPLSGQLVTPADIRRRQARRVKKARERLAKALQADRLARRAEMLTGG</p> <p>TRTRPLEQKLISEEDLAANDILDYKDDDDKV</p>
Tag:	C-Myc/DDK
Purity:	> 80% as determined by SDS-PAGE and Coomassie blue staining
Concentration:	>0.05 µg/µL as determined by microplate BCA method
Labeling Method:	Labeled with [U- ¹³ C ₆ , ¹⁵ N ₄]-L-Arginine and [U- ¹³ C ₆ , ¹⁵ N ₂]-L-Lysine
Buffer:	25 mM Tris-HCl, 100 mM glycine, pH 7.3
Storage:	Store at -80°C. Avoid repeated freeze-thaw cycles.
Stability:	Stable for 3 months from receipt of products under proper storage and handling conditions.
RefSeq:	<u>NP_653215</u>
RefSeq Size:	777
RefSeq ORF:	624
Locus ID:	125997
UniProt ID:	<u>Q8NHZ7</u>
Cytogenetics:	19p13.2


[View online »](#)

Summary:

This gene encodes a protein that is related to methyl-CpG-binding proteins but lacks the methyl-CpG binding domain. The protein has been found in germ cell tumors and some somatic tissues. [provided by RefSeq, Jul 2008]

Product images:


Coomassie blue staining of purified MBD3L2 protein (Cat# [TP321935]). The protein was produced from HEK293T cells transfected with MBD3L2 cDNA clone (Cat# [RC221935]) using MegaTran 2.0 (Cat# [TT210002]).