

Product datasheet for PH321919

SLC12A3 (NM_000339) Human Mass Spec Standard

Product data:

Product Type:	Mass Spec Standards
Description:	SLC12A3 MS Standard C13 and N15-labeled recombinant protein (NP_000330)
Species:	Human
Expression Host:	HEK293
Expression cDNA Clone or AA Sequence:	RC221919
Predicted MW:	113.7 kDa
Protein Sequence:	>RC221919 representing NM_000339 Red=Cloning site Green=Tags(s)

MAELPTTETPGDATLCSGRFTISTLLSSDESPPAAYDSSHPSHLTHSSTFCMRTFGYNTIDVVPTYEHY
ANSTQPGEPKVRPTLADLHSLKQEGRHLHALAFDSRPSHEMTDGLVEGEAGTSSEKNPEEPVRFGWVK
GVMIRCMLNIWGVILYLRLPWITAQAGIVLTWIIILLSVTVTSITGLSISAISTNGKVKSGGTYFLISRS
LGPELGGSIGLIFAFANAVGVAMHTVGF AETVRDLLQEYGAPIVDPINDIRIIGVSVTVLLAISLAGME
WESKAQVLFLLVIMVSFANYLVGTLIPPEDEKASKGFFSYRADIFVQNLVPDWRGPDGTFGFMFSIFFPS
ATGILAGANISGDLKDPAAIIPKGTLM AIFWTTISYLAISATIGSCVVRDASGVLN DTVTPGWGACEGLA
CSYGWNFTECTQQHSCHYGLINYYQTMSMVS GFAPLITAGIFGATLSSALACL VSAAKVFQCLCEDQLYP
LIGFFGKGYGKNKEPVRGYLLAYAI AVAF IIIAELNTI APIISNFFLCSYALINFSCFHASITNSPGWRP
SFQYYNKWAALFGAIISVVMFLLTWAAALIAIGVVL FLLLYVIYKKEPVNWGSSVQAGSYNLALSYSVG
LNEVEDHIKNYRPQCLVLTGPPNFRPALVDFVGTFRNLSLMICGHVLI GPHKQRMPELQLIANGHTKWL
NKRKIKAFYSDVIAEDLRRGVQILMQAAGLGRMKPNILVVGFKKNWQSAHPATVEDYIGILHDAFD FNYG
VCVMRMREGLNVSKMMQAHINPVFDPAEDGKEASARGARPSVSGALDPKALVKEEQATTIFQSEQGKTI
DIYWL FDDGGLTLLIPYLLGRKRRWSKCKIRV FVGGQINRMDQERKAIISLLSKFRLGFHEVHILPDINQ
NPRAEHTKRFEDMIAPFRLNDGFKDEATVNEMRRDCPWKISDEEITKNRVKSLRQVRLNEIVLDYSRDAAL
LIVITLPIGRKGKCPSSLYMAWLETLSQDLRPPVILIRGNQENVLTFYCQ

TRTRPLEQKLI SEEDLAANDILDYKDDDDKV

Tag:	C-Myc/DDK
Purity:	> 80% as determined by SDS-PAGE and Coomassie blue staining
Concentration:	>0.05 µg/µL as determined by microplate BCA method
Labeling Method:	Labeled with [U- ¹³ C ₆ , ¹⁵ N ₄]-L-Arginine and [U- ¹³ C ₆ , ¹⁵ N ₂]-L-Lysine
Buffer:	25 mM Tris-HCl, 100 mM glycine, pH 7.3
Storage:	Store at -80°C. Avoid repeated freeze-thaw cycles.



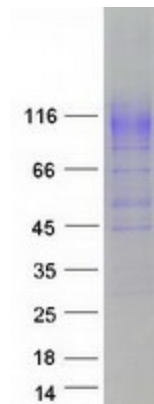
[View online »](#)

Stability:	Stable for 3 months from receipt of products under proper storage and handling conditions.
RefSeq:	NP_000330
RefSeq Size:	3131
RefSeq ORF:	3090
Synonyms:	NCC; NCCT; TSC
Locus ID:	6559
UniProt ID:	P55017
Cytogenetics:	16q13

Summary: This gene encodes a renal thiazide-sensitive sodium-chloride cotransporter that is important for electrolyte homeostasis. This cotransporter mediates sodium and chloride reabsorption in the distal convoluted tubule. Mutations in this gene cause Gitelman syndrome, a disease similar to Bartter's syndrome, that is characterized by hypokalemic alkalosis combined with hypomagnesemia, low urinary calcium, and increased renin activity associated with normal blood pressure. This cotransporter is the target for thiazide diuretics that are used for treating high blood pressure. Multiple transcript variants encoding different isoforms have been found for this gene. [provided by RefSeq, Jul 2008]

Protein Families: Druggable Genome, Transmembrane

Product images:



Coomassie blue staining of purified SLC12A3 protein (Cat# [TP321919]). The protein was produced from HEK293T cells transfected with SLC12A3 cDNA clone (Cat# [RC221919]) using MegaTran 2.0 (Cat# [TT210002]).