

## Product datasheet for PH321913

### SKA1 (NM\_001039535) Human Mass Spec Standard

#### Product data:

Product Type:	Mass Spec Standards
Description:	SKA1 MS Standard C13 and N15-labeled recombinant protein (NP_001034624)
Species:	Human
Expression Host:	HEK293
Expression cDNA Clone or AA Sequence:	RC221913
Predicted MW:	29.5 kDa
Protein Sequence:	>RC221913 protein sequence Red=Cloning site Green=Tags(s)  MASSDLEQLCSHVNEKIGNIKKTLSLRNCGQEPTLKTVLNKGDEIIVINELLNKLELEIQYQEQTNNSL KELCESLEEDYKDIEHLKENVPSHLPQVTVTQSCVKGSDLDPEEPIKVEEPEPVKKPPKEQRSIKEMPF TCDEFNGVPSYMKSRSLTYNQINDVIKEINKAVISKYKILHQPKKSMNSVTRNLYHRFIDEETKDTKG RYFIVEADIKEFTTLKADKKFHVLLNILRHCRLSEVRGGGLTRYVIT  TRTRPLEQKLI SEEDLAANDILDYKDDDDKV
Tag:	C-Myc/DDK
Purity:	> 80% as determined by SDS-PAGE and Coomassie blue staining
Concentration:	>0.05 µg/µL as determined by microplate BCA method
Labeling Method:	Labeled with [U- <sup>13</sup> C <sub>6</sub> , <sup>15</sup> N <sub>4</sub> ]-L-Arginine and [U- <sup>13</sup> C <sub>6</sub> , <sup>15</sup> N <sub>2</sub> ]-L-Lysine
Buffer:	25 mM Tris-HCl, 100 mM glycine, pH 7.3
Storage:	Store at -80°C. Avoid repeated freeze-thaw cycles.
Stability:	Stable for 3 months from receipt of products under proper storage and handling conditions.
RefSeq:	<a href="#">NP_001034624</a>
RefSeq Size:	2938
RefSeq ORF:	765
Synonyms:	C18orf24
Locus ID:	220134
UniProt ID:	<a href="#">Q96BD8</a> , <a href="#">A0A024R294</a>



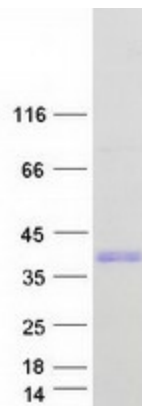
[View online »](#)

Cytogenetics: 18q21.1

**Summary:**

Component of the SKA1 complex, a microtubule-binding subcomplex of the outer kinetochore that is essential for proper chromosome segregation (PubMed:17093495, PubMed:19289083, PubMed:23085020). Required for timely anaphase onset during mitosis, when chromosomes undergo bipolar attachment on spindle microtubules leading to silencing of the spindle checkpoint (PubMed:17093495). The SKA1 complex is a direct component of the kinetochore-microtubule interface and directly associates with microtubules as oligomeric assemblies (PubMed:19289083). The complex facilitates the processive movement of microspheres along a microtubule in a depolymerization-coupled manner (PubMed:19289083). Affinity for microtubules is synergistically enhanced in the presence of the ndc-80 complex and may allow the ndc-80 complex to track depolymerizing microtubules (PubMed:23085020). In the complex, it mediates the interaction with microtubules (PubMed:19289083, PubMed:23085020).[UniProtKB/Swiss-Prot Function]

**Product images:**



Coomassie blue staining of purified SKA1 protein (Cat# [TP321913]). The protein was produced from HEK293T cells transfected with SKA1 cDNA clone (Cat# [RC221913]) using MegaTran 2.0 (Cat# [TT210002]).