

## Product datasheet for PH321902

### LIN7 (LIN7A) (NM\_004664) Human Mass Spec Standard

#### Product data:

Product Type:	Mass Spec Standards
Description:	LIN7A MS Standard C13 and N15-labeled recombinant protein (NP_004655)
Species:	Human
Expression Host:	HEK293
Expression cDNA Clone or AA Sequence:	RC221902
Predicted MW:	26 kDa
Protein Sequence:	>RC221902 protein sequence <b>Red</b> =Cloning site <b>Green</b> =Tags(s)  MLKPSVTSAPTADMATLTVVQPLTLDRDVARAIELLEKLQESGEVPVHKLQSLKKVLQSEFCTAIREVYQ YMHETITVNGCPEFRARATAKATVAAFAASEGSHPRVVELPKTDEGLGFNVMGGKEQNSPIYISRIIPG GVAERHGGLKRGDQLLSVNGVSVEGEHHEKAVELLKAAKDSVKLVVRYTPKVLEEMEARFEKLRRTARRRQ QQQLLIQQQQQQQQQTQQNHMS  <b>TRTRPLEQKLI SEEDLAANDILDYKDDDDKV</b>
Tag:	C-Myc/DDK
Purity:	> 80% as determined by SDS-PAGE and Coomassie blue staining
Concentration:	>0.05 µg/µL as determined by microplate BCA method
Labeling Method:	Labeled with [U- <sup>13</sup> C <sub>6</sub> , <sup>15</sup> N <sub>4</sub> ]-L-Arginine and [U- <sup>13</sup> C <sub>6</sub> , <sup>15</sup> N <sub>2</sub> ]-L-Lysine
Buffer:	25 mM Tris-HCl, 100 mM glycine, pH 7.3
Storage:	Store at -80°C. Avoid repeated freeze-thaw cycles.
Stability:	Stable for 3 months from receipt of products under proper storage and handling conditions.
RefSeq:	<a href="#">NP_004655</a>
RefSeq Size:	1235
RefSeq ORF:	699
Synonyms:	LIN-7A; LIN7; MALS-1; MALS1; TIP-33; VEL11
Locus ID:	8825
UniProt ID:	<a href="#">O14910</a>



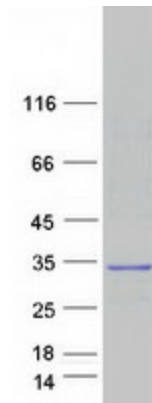
[View online »](#)

Cytogenetics: 12q21.31

**Summary:** The protein encoded by this gene is involved in generating and maintaining the asymmetric distribution of channels and receptors at the cell membrane. The encoded protein also is required for the localization of some specific channels and can be part of a protein complex that couples synaptic vesicle exocytosis to cell adhesion in the brain. [provided by RefSeq, May 2016]

Protein Families: Druggable Genome

### Product images:



Coomassie blue staining of purified LIN7A protein (Cat# [TP321902]). The protein was produced from HEK293T cells transfected with LIN7A cDNA clone (Cat# [RC221902]) using MegaTran 2.0 (Cat# [TT210002]).