

## Product datasheet for PH321901

### CLEC17A (NM\_207390) Human Mass Spec Standard

#### Product data:

Product Type:	Mass Spec Standards
Description:	CLEC17A MS Standard C13 and N15-labeled recombinant protein (NP_997273)
Species:	Human
Expression Host:	HEK293
Expression cDNA Clone or AA Sequence:	RC221901
Predicted MW:	32.2 kDa
Protein Sequence:	>RC221901 representing NM_207390 Red=Cloning site Green=Tags(s)

MHNLYSITGYDPDPPGTMEEEEEEDDYENSTPPYKDLPPKPGTMEEEEEEDDYENSTPPYKDLPPKPGTME  
EEEEEDDYENSTPPYKDLPPKPGSSAPPRPPRAAKETEKPLPCKPRNMTGLDLAAVTCPPQLAVNLEP  
SPLQPSLAATPVWLNQRSGGPGCCQKRWMVYLCLLVVTSFLGCLGLTVTLIKYQELMEELRMLSFQQM  
TWRTNMTGMAGLAGLKHDIARVRADTNQSLVELWGLLDCRRITCEGWLPFEGKCYFSPSTKSWDEARM  
FCQENYSHLVIINSFAEHLGARGTQ

TRTRPLEQKLISEEDLAANDILDYKDDDDKV

Tag:	C-Myc/DDK
Purity:	> 80% as determined by SDS-PAGE and Coomassie blue staining
Concentration:	>0.05 µg/µL as determined by microplate BCA method
Labeling Method:	Labeled with [U- <sup>13</sup> C <sub>6</sub> , <sup>15</sup> N <sub>4</sub> ]-L-Arginine and [U- <sup>13</sup> C <sub>6</sub> , <sup>15</sup> N <sub>2</sub> ]-L-Lysine
Buffer:	25 mM Tris-HCl, 100 mM glycine, pH 7.3
Storage:	Store at -80°C. Avoid repeated freeze-thaw cycles.
Stability:	Stable for 3 months from receipt of products under proper storage and handling conditions.
RefSeq:	<u><a href="#">NP_997273</a></u>
RefSeq Size:	2090
RefSeq ORF:	918
Locus ID:	388512
UniProt ID:	<u><a href="#">Q6ZS10</a></u>



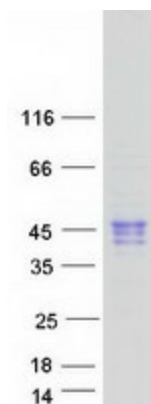
[View online »](#)

Cytogenetics: 19p13.12

Summary: Cell surface receptor which may be involved in carbohydrate-mediated communication between cells in the germinal center. Binds glycans with terminal alpha-linked mannose or fucose residues.[UniProtKB/Swiss-Prot Function]

Protein Families: Transmembrane

### Product images:



Coomassie blue staining of purified CLEC17A protein (Cat# [TP321901]). The protein was produced from HEK293T cells transfected with CLEC17A cDNA clone (Cat# [RC221901]) using MegaTran 2.0 (Cat# [TT210002]).