

## Product datasheet for PH321878

### FCRL2 (NM\_030764) Human Mass Spec Standard

#### Product data:

Product Type:	Mass Spec Standards
Description:	FCRL2 MS Standard C13 and N15-labeled recombinant protein (NP_110391)
Species:	Human
Expression Host:	HEK293
Expression cDNA Clone or AA Sequence:	RC221878
Predicted MW:	53.4 kDa
Protein Sequence:	>RC221878 representing NM_030764 Red=Cloning site Green=Tags(s)

MLLWSLLVIFDAVTEQADSLTLVAPSSVFEGDSIVLKCQGEQNWIKQKMAVHKDNKELSVFKKFSDFLIQ  
SAVLSDSGNYFCSTKGQLFLWDKTSNIVKIKVQELFQRPVLTASSFQPIEGGPVSLKCETRLSPQRLDVQ  
LQFCFFRENQVLGSGWSSPELQISAVWSEDTGSYWCKAETVTHIRKQSLQSQIHVQRIPISNVLSLEIR  
APGGQVTEGQKLILLCSVAGGTGNVTFSWYREATGTSMGKKTQRSLSAELEIPAVKESDAGKYCRADNG  
HVPIQSKVVNIPVRIIPVSRPVLTLRSPGAQAAVGDLELHCEALRGSPPILYQFYHEDVTLGNSSAPSGG  
GASFNLSLTAHSGNYSCEANGLGAQCSEAVPVSISGPDGYRRDLMTAGVLWGLFVGLGFTGVALLLYA  
LFHKISGESSATNEPRGASRPNPQEFTYSPTPMEELQPVYVNVGSDVDVVVYSQVWSMQQPESANIR  
TLLENKDSQVIYSSVKKS

TRTRPLEQKLI SEEDLAANDILDYKDDDDKV

Tag:	C-Myc/DDK
Purity:	> 80% as determined by SDS-PAGE and Coomassie blue staining
Concentration:	>0.05 µg/µL as determined by microplate BCA method
Labeling Method:	Labeled with [U- <sup>13</sup> C <sub>6</sub> , <sup>15</sup> N <sub>4</sub> ]-L-Arginine and [U- <sup>13</sup> C <sub>6</sub> , <sup>15</sup> N <sub>2</sub> ]-L-Lysine
Buffer:	25 mM Tris-HCl, 100 mM glycine, pH 7.3
Storage:	Store at -80°C. Avoid repeated freeze-thaw cycles.
Stability:	Stable for 3 months from receipt of products under proper storage and handling conditions.
RefSeq:	<a href="#">NP_110391</a>
RefSeq Size:	2573
RefSeq ORF:	1524



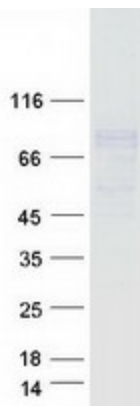
[View online »](#)

**Synonyms:** CD307b; FCRH2; IFGP4; IRTA4; SPAP1; SPAP1A; SPAP1B; SPAP1C  
**Locus ID:** 79368  
**UniProt ID:** [Q96LA5](#), [B4E0W2](#)  
**Cytogenetics:** 1q23.1

**Summary:** This gene encodes a member of the immunoglobulin receptor superfamily and is one of several Fc receptor-like glycoproteins clustered on the long arm of chromosome 1. The encoded protein has four extracellular C2-type immunoglobulin domains, a transmembrane domain and a cytoplasmic domain that contains one immunoreceptor-tyrosine activation motif and two immunoreceptor-tyrosine inhibitory motifs. This protein may be a prognostic marker for chronic lymphocytic leukemia. Alternatively spliced transcript variants have been described, but their biological validity has not been determined. [provided by RefSeq, Apr 2009]

**Protein Families:** Druggable Genome, Transmembrane

### Product images:



Coomassie blue staining of purified FCRL2 protein (Cat# [TP321878]). The protein was produced from HEK293T cells transfected with FCRL2 cDNA clone (Cat# [RC221878]) using MegaTran 2.0 (Cat# [TT210002]).