

## Product datasheet for PH321840

### RND2 (NM\_005440) Human Mass Spec Standard

#### Product data:

Product Type:	Mass Spec Standards
Description:	RND2 MS Standard C13 and N15-labeled recombinant protein (NP_005431)
Species:	Human
Expression Host:	HEK293
Expression cDNA Clone or AA Sequence:	RC221840
Predicted MW:	25.4 kDa
Protein Sequence:	>RC221840 protein sequence Red=Cloning site Green=Tags(s)  MEGQSGRCKIVVVGDAECGKTALLQVFAKDAYPGSYVPTVFENYASFEIDKRRIELNMWDTSGSSYYDN VRPLAYPDSDAVLICFDISRPE TLDSVLKQWGETQEFCPNAKVVLVGCKLDMRTDLATLREL SKQRLIP VTHEQGTVLAKQVGAVSYVECSSRSSERSVRDVFHVATVASLGRGHRQLRRTDSRRGMQSAQLSGRPDR GNEGEIHKDRAKSCNLM  TRTRPLEQKLI SEEDLAANDILDYKDDDDKV
Tag:	C-Myc/DDK
Purity:	> 80% as determined by SDS-PAGE and Coomassie blue staining
Concentration:	>0.05 µg/µL as determined by microplate BCA method
Labeling Method:	Labeled with [U- <sup>13</sup> C <sub>6</sub> , <sup>15</sup> N <sub>4</sub> ]-L-Arginine and [U- <sup>13</sup> C <sub>6</sub> , <sup>15</sup> N <sub>2</sub> ]-L-Lysine
Buffer:	25 mM Tris-HCl, 100 mM glycine, pH 7.3
Storage:	Store at -80°C. Avoid repeated freeze-thaw cycles.
Stability:	Stable for 3 months from receipt of products under proper storage and handling conditions.
RefSeq:	<a href="#">NP_005431</a>
RefSeq Size:	4169
RefSeq ORF:	681
Synonyms:	ARHN; RHO7; RhoN
Locus ID:	8153
UniProt ID:	<a href="#">P52198</a>

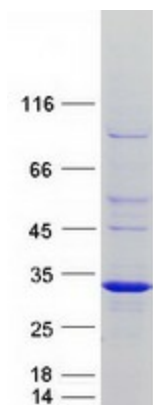


[View online »](#)

Cytogenetics: 17q21.31

**Summary:** This gene encodes a member of the Rho GTPase family, whose members play a key role in the regulation of actin cytoskeleton organization in response to extracellular growth factors. This particular family member has been implicated in the regulation of neuronal morphology and endosomal trafficking. The gene localizes to chromosome 17 and is the centromeric neighbor of the breast-ovarian cancer susceptibility gene BRCA1. [provided by RefSeq, Jul 2008]

**Product images:**



Coomassie blue staining of purified RND2 protein (Cat# [TP321840]). The protein was produced from HEK293T cells transfected with RND2 cDNA clone (Cat# [RC221840]) using MegaTran 2.0 (Cat# [TT210002]).