

Product datasheet for PH321806

C1orf222 (NM_001003808) Human Mass Spec Standard

Product data:

Product Type:	Mass Spec Standards
Description:	C1orf222 MS Standard C13 and N15-labeled recombinant protein (NP_001003808)
Species:	Human
Expression Host:	HEK293
Expression cDNA Clone or AA Sequence:	RC221806
Predicted MW:	33.2 kDa
Protein Sequence:	>RC221806 protein sequence Red=Cloning site Green=Tags(s)

MGTGVASMITCSIEGSVLNMGYVIAGESVSSGFKLQNNLLPIKFSMHLDSLSTRGRGQQQLPQFLSSP
SQRTEVVGTVQNLNGQSVFVAPVKGVMGPKTQDFTVTFSPDHESLYFSDKLQVVLFEKKISHQILLKGA
ACQHMMFVEGGDPLDVPVESLTAIPVFDPRHREASSRPGPLSPEAEELRPILVTLDYIQFDTDTPAPPAT
RELQVGCIRTTQSPKKTVEFSIDSVASLQHKGFSEPSRGSVERGQTKTISISWVPPADFPDHPMLMVS
ALLQLRGDVKETYKVIFVAQVLTGP

TRTRPLEQKLISEEDLAANDILDYKDDDDKV

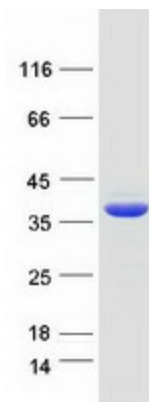
Tag:	C-Myc/DDK
Purity:	> 80% as determined by SDS-PAGE and Coomassie blue staining
Concentration:	>0.05 µg/µL as determined by microplate BCA method
Labeling Method:	Labeled with [U- ¹³ C ₆ , ¹⁵ N ₄]-L-Arginine and [U- ¹³ C ₆ , ¹⁵ N ₂]-L-Lysine
Buffer:	25 mM Tris-HCl, 100 mM glycine, pH 7.3
Storage:	Store at -80°C. Avoid repeated freeze-thaw cycles.
Stability:	Stable for 3 months from receipt of products under proper storage and handling conditions.
RefSeq:	<u>NP_001003808</u>
RefSeq Size:	2824
RefSeq ORF:	915
Synonyms:	MGC133181
Locus ID:	339457



[View online »](#)

Cytogenetics: 1p36.33

Product images:



Coomassie blue staining of purified C1orf222 protein (Cat# [TP321806]). The protein was produced from HEK293T cells transfected with C1orf222 cDNA clone (Cat# [RC221806]) using MegaTran 2.0 (Cat# [TT210002]).