

Product datasheet for PH321798

RCC1 (NM_001269) Human Mass Spec Standard

Product data:

| | |
|---------------------------------------|--|
| Product Type: | Mass Spec Standards |
| Description: | RCC1 MS Standard C13 and N15-labeled recombinant protein (NP_001260) |
| Species: | Human |
| Expression Host: | HEK293 |
| Expression cDNA Clone or AA Sequence: | RC221798 |
| Predicted MW: | 45 kDa |
| Protein Sequence: | >RC221798 protein sequence Red=Cloning site Green=Tags(s) |

MSPKRIAKRRSPADAIPKSKKVKVSHRSHSTEPGLVLTGQGDVQQLGLGENVMERKKPALVSIPEDEVV
QAEAGGMHTVCLSKSGQVYVYFGCNDEGALGRDTSVEGSEMVPKVELQEKVVQVSAGDSHTAALTDGGRV
FLWGSFRDNNGVIGLLEPMKSMVPVQVQLDVPVVKVASGNDHLVMLTADGDLYTLGCGEQQQLGRVPEL
FANRGGRQGLERLLVPKCVMLKSRGSRGHVRFQDAFCGAYFTFAISHEGHVYGFGLSNYHQLGTPGTESC
FIPQNLTSFKNSTKSWVGFSGGQHHTVCMDEGKAYS LGRAEYGRGLGEGAEKSIPTLISRLPAVSSV
ACGASVGYAVTKDGRVFAWGMGTNYQLGTQDEDAWSPVEMMGKQLENRVVLSVSSGGQHTVLLVKDKEQ
S

TRTRPLEQKLI SEEDLAANDILDYKDDDDKV

| | |
|------------------|--|
| Tag: | C-Myc/DDK |
| Purity: | > 80% as determined by SDS-PAGE and Coomassie blue staining |
| Concentration: | >0.05 µg/µL as determined by microplate BCA method |
| Labeling Method: | Labeled with [U- ¹³ C ₆ , ¹⁵ N ₄]-L-Arginine and [U- ¹³ C ₆ , ¹⁵ N ₂]-L-Lysine |
| Buffer: | 25 mM Tris-HCl, 100 mM glycine, pH 7.3 |
| Storage: | Store at -80°C. Avoid repeated freeze-thaw cycles. |
| Stability: | Stable for 3 months from receipt of products under proper storage and handling conditions. |
| RefSeq: | <u>NP_001260</u> |
| RefSeq Size: | 2540 |
| RefSeq ORF: | 1263 |
| Synonyms: | CHC1; RCC1-I; SNHG3-RCC1 |



[View online »](#)

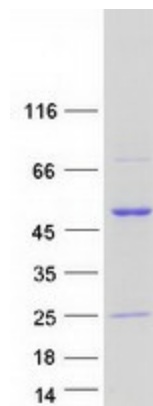
Locus ID: 1104

UniProt ID: [P18754](#), [Q5T081](#)

Cytogenetics: 1p35.3

Summary: Guanine-nucleotide releasing factor that promotes the exchange of Ran-bound GDP by GTP, and thereby plays an important role in RAN-mediated functions in nuclear import and mitosis (PubMed:1944575, PubMed:17435751, PubMed:20668449, PubMed:22215983, PubMed:11336674). Contributes to the generation of high levels of chromosome-associated, GTP-bound RAN, which is important for mitotic spindle assembly and normal progress through mitosis (PubMed:12194828, PubMed:17435751, PubMed:22215983). Via its role in maintaining high levels of GTP-bound RAN in the nucleus, contributes to the release of cargo proteins from importins after nuclear import (PubMed:22215983). Involved in the regulation of onset of chromosome condensation in the S phase (PubMed:3678831). Binds both to the nucleosomes and double-stranded DNA (PubMed:17435751, PubMed:18762580).
[UniProtKB/Swiss-Prot Function]

Product images:



Coomassie blue staining of purified RCC1 protein (Cat# [TP321798]). The protein was produced from HEK293T cells transfected with RCC1 cDNA clone (Cat# [RC221798]) using MegaTran 2.0 (Cat# [TT210002]).