

Product datasheet for PH321793

RAP1B (NM_001010942) Human Mass Spec Standard

Product data:

Product Type:	Mass Spec Standards
Description:	RAP1B MS Standard C13 and N15-labeled recombinant protein (NP_001010942)
Species:	Human
Expression Host:	HEK293
Expression cDNA Clone or AA Sequence:	RC221793
Predicted MW:	20.6 kDa
Protein Sequence:	<p>>RC221793 representing NM_001010942</p> <p>Red=Cloning site Green=Tags(s)</p> <p>MREYKLVVLGSGVGKSALTVQFVQGFVEKYDPTIEDSYRKQVEVDAQQCMLEILDAGTEQFTAMRDL YMKNGQGFAVYSITAQSTFNDLQDLREQILRVKDTDDVPMILVGNKCDLEDERVVGKEQGQNLARQWNN CAFLESSAKSKINVNEIFYDLVRQINRKTPVPGKARKKSSCQLL</p> <p>TRTRPLEQKLISEEDLAANDILDYKDDDDKV</p>
Tag:	C-Myc/DDK
Purity:	> 80% as determined by SDS-PAGE and Coomassie blue staining
Concentration:	>0.05 µg/µL as determined by microplate BCA method
Labeling Method:	Labeled with [U- ¹³ C ₆ , ¹⁵ N ₄]-L-Arginine and [U- ¹³ C ₆ , ¹⁵ N ₂]-L-Lysine
Buffer:	25 mM Tris-HCl, 100 mM glycine, pH 7.3
Storage:	Store at -80°C. Avoid repeated freeze-thaw cycles.
Stability:	Stable for 3 months from receipt of products under proper storage and handling conditions.
RefSeq:	NP_001010942
RefSeq Size:	2117
RefSeq ORF:	552
Synonyms:	K-REV; RAL1B
Locus ID:	5908
UniProt ID:	P61224 , A0A024RB87



[View online »](#)

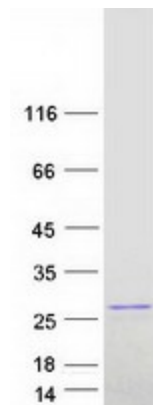
Cytogenetics: 12q15

Summary: This gene encodes a member of the RAS-like small GTP-binding protein superfamily. Members of this family regulate multiple cellular processes including cell adhesion and growth and differentiation. This protein localizes to cellular membranes and has been shown to regulate integrin-mediated cell signaling. This protein also plays a role in regulating outside-in signaling in platelets. Alternate splicing results in multiple transcript variants. Pseudogenes of this gene are found on chromosomes 3, 5, 6 and 9. [provided by RefSeq, Oct 2011]

Protein Families: Druggable Genome

Protein Pathways: Chemokine signaling pathway, Focal adhesion, Leukocyte transendothelial migration, Long-term potentiation, MAPK signaling pathway, Neurotrophin signaling pathway, Renal cell carcinoma

Product images:



Coomassie blue staining of purified RAP1B protein (Cat# [TP321793]). The protein was produced from HEK293T cells transfected with RAP1B cDNA clone (Cat# [RC221793]) using MegaTran 2.0 (Cat# [TT210002]).