

Product datasheet for PH321774

ART5 (NM_001079536) Human Mass Spec Standard

Product data:

Product Type:	Mass Spec Standards
Description:	ART5 MS Standard C13 and N15-labeled recombinant protein (NP_001073004)
Species:	Human
Expression Host:	HEK293
Expression cDNA Clone or AA Sequence:	RC221774
Predicted MW:	32.2 kDa
Protein Sequence:	>RC221774 protein sequence Red =Cloning site Green =Tags(s) MALAALMIALGSLGLHTWQAQAVPTILPLGLAPDTFDDTYVGCVEEMEEKAAPLLKEEMAHHALLRESWE AAQETWEDKRRGLTLPFGKAQNGIAIMVYTNSNTLYWELNQAVRTGGGSREL YMRHFPFKALHFYLIR ALQLLRGSGGCSRGPGEVYFRGVGSLRFEPKRLGDSVRLGQFASSSLDKAVAHRFGNATLFLSTTCFGAP IQAFSVFPKEREVLIPPHEVFLVTRFSQDGAQSLVTLWSYNQTCSHFNCAYLGGEKRRGCVSAPGALGTG DLHMTKRHLQQP TRTRPLEQKLISEEDLAANDILDYKDDDDKV
Tag:	C-Myc/DDK
Purity:	> 80% as determined by SDS-PAGE and Coomassie blue staining
Concentration:	>0.05 µg/µL as determined by microplate BCA method
Labeling Method:	Labeled with [U- ¹³ C ₆ , ¹⁵ N ₄]-L-Arginine and [U- ¹³ C ₆ , ¹⁵ N ₂]-L-Lysine
Buffer:	25 mM Tris-HCl, 100 mM glycine, pH 7.3
Storage:	Store at -80°C. Avoid repeated freeze-thaw cycles.
Stability:	Stable for 3 months from receipt of products under proper storage and handling conditions.
RefSeq:	NP_001073004
RefSeq Size:	1249
RefSeq ORF:	876
Synonyms:	ARTC5
Locus ID:	116969



[View online »](#)

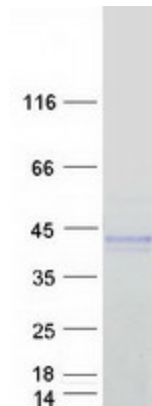
UniProt ID: [Q96L15](#)

Cytogenetics: 11p15.4

Summary: The protein encoded by this gene belongs to the ARG-specific ADP-ribosyltransferase family. Proteins in this family regulate the function of target proteins by attaching ADP-ribose to specific amino acid residues in their target proteins. The mouse homolog lacks a glycosylphosphatidylinositol-anchor signal sequence and is predicted to be a secretory enzyme. Several transcripts encoding different isoforms have been found for this gene. [provided by RefSeq, Jul 2014]

Protein Families: Secreted Protein

Product images:



Coomassie blue staining of purified ART5 protein (Cat# [TP321774]). The protein was produced from HEK293T cells transfected with ART5 cDNA clone (Cat# [RC221774]) using MegaTran 2.0 (Cat# [TT210002]).