

Product datasheet for PH321773

Matrilin 3 (MATN3) (NM_002381) Human Mass Spec Standard

Product data:

Product Type:	Mass Spec Standards
Description:	MATN3 MS Standard C13 and N15-labeled recombinant protein (NP_002372)
Species:	Human
Expression Host:	HEK293
Expression cDNA Clone or AA Sequence:	RC221773
Predicted MW:	52.82 kDa
Protein Sequence:	>RC221773 representing NM_002381 Red=Cloning site Green=Tags(s)

MPRPAPARRLPGLLLLLWPLLLLPSAAPDPVARPGFRRLETRGPGGSPGRRPSPAAPDGAPASGTSEPGR
ARGAGVCKSRPLDLVFIIDSSRSVRPLEFTKVKTFSRIIDTLDIGPADTRVAVVNYASTVKIEFQLQAY
TDKQSLKQAVGRITPLSTGTMSGLAIQTAMDEAFVEAGAREPSSNIPKVAIIVTDGRPQDQVNEVAARA
QASGIELYAVGVDRADMASLKMMASEPLEEHVYVETYGVIEKLSRFQETFCALDPCVLGTHQCQHVICI
SDGEGKHHCECSQGYTLNADKKTCSALDRCALNTHGCEHICVNDRSGSYHCECYEGYTLNEDRKTCQAQD
KCALGTHGCQHICVNDRTGSHHCECYEGYTLNADKKTCSVRDKCALGSHGCQHICVSDGAASYHDCDCYPG
YTLNEDKKTCSATEEARRLVSTEDACGCEATLAFQDKVSSYLQRLNTKLDDILEKIKINEYGQIHR

TRTRPLEQKLISEEDLAANDILDYKDDDDKV

Tag:	C-Myc/DDK
Purity:	> 80% as determined by SDS-PAGE and Coomassie blue staining
Concentration:	>0.05 µg/µL as determined by microplate BCA method
Labeling Method:	Labeled with [U- 13C6, 15N4]-L-Arginine and [U- 13C6, 15N2]-L-Lysine
Buffer:	25 mM Tris-HCl, 100 mM glycine, pH 7.3
Storage:	Store at -80°C. Avoid repeated freeze-thaw cycles.
Stability:	Stable for 3 months from receipt of products under proper storage and handling conditions.
RefSeq:	<u>NP_002372</u>
RefSeq Size:	2599
RefSeq ORF:	1458
Synonyms:	DIPOA; EDM5; HOA; OADIP; OS2; SEMDBCD



[View online »](#)

Locus ID: 4148

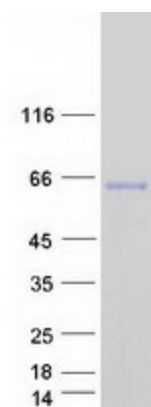
UniProt ID: [O15232](#)

Cytogenetics: 2p24.1

Summary: This gene encodes a member of von Willebrand factor A domain containing protein family. This family of proteins is thought to be involved in the formation of filamentous networks in the extracellular matrices of various tissues. This protein contains two von Willebrand factor A domains; it is present in the cartilage extracellular matrix and has a role in the development and homeostasis of cartilage and bone. Mutations in this gene result in multiple epiphyseal dysplasia. [provided by RefSeq, Jul 2008]

Protein Families: Druggable Genome, Secreted Protein

Product images:



Coomassie blue staining of purified MATN3 protein (Cat# [TP321773]). The protein was produced from HEK293T cells transfected with MATN3 cDNA clone (Cat# [RC221773]) using MegaTran 2.0 (Cat# [TT210002]).