

Product datasheet for PH321769

IGSF3 (NM_001007237) Human Mass Spec Standard

Product data:

Product Type:	Mass Spec Standards
Description:	IGSF3 MS Standard C13 and N15-labeled recombinant protein (NP_001007238)
Species:	Human
Expression Host:	HEK293
Expression cDNA Clone or AA Sequence:	RC221769
Predicted MW:	135.3 kDa
Protein Sequence:	>RC221769 protein sequence Red=Cloning site Green=Tags(s)

MKCFPPVLSCLAVLGVVSAQRQVTVQEGPLYRTEGSHITIWCVNSGYQGPSEQNFQWSIYLPSSPEREVQ
IVSTMDSFPYAIYTQVRVGGKIFIERVQGNSTLLHITDLQARDAGEYECHTPSTDKQYFGSYSAKMNLV
VIPDSLQTTAMPQTLHRVEQDPLELTCEVASETIQSHLSVAWLKQKVGKEKPVVEISLDRDFMLHSSEY
AQRQSLGEVRLDKLGRITFRLTIFHLQPSDQGEFYCEAAEWIQDPDGSWYAMTRKRSEGAVVNVQPTDKE
FTVRLTEKRLHTVGEPVEFRICILEAQNVDPDRYFAVSWAFNSSLIATMGPNAVPLNSEFAHREARGQK
VAKESDSVFLKIYHLRQEDSGKYNCRVTEREKTVTGEFIDKESKRPNIP IIVLPLKSSISVEVASNAS
VILEGEDLRFSCSVRTAGRPQGRFSVIWQLVDRQNRRSNIMWLD RDGTVPQSSYWERSSFGGVQMEQVQ
PNSFSLGIFNSRKEDEGQYECHEVTEWVRAVDGEWQIVGERRASTPISITALEMGFAVTAISRTPGVTYSD
SFDLQCIKPHYPAWVPSVTWRFQPVGTVEFHDLVTFTRDGGVQWGDSSFRTRTAIEKAESSNNVRL
SISRASDTEAGKYQCVAELWRKNYNTWTRLAERTSNLLEIRVLQPVTKLQVSKSKRTLTLVENKPIQLN
CSVKSQTSQNSHFAVLWYVHKPSDADGKILKTTTHNSAFEYGYAEEEGRLRARLQFERHVSGLFSLTVQ
RAEVSDSGSYCHVEEWLLSPNYAWYKLAEEVSGRTEVTVKQPD SRLRLSQAQGNLSVLETRQVQLECVV
LNRTSITSQLMVEWFVWKNHPERETVARLSRDATFHGEQAANKNLKGRHLHLESPSPGVYRLF IQNVAV
QDSGTYSCHVEEWLPSPSGMWKRAEDTAGQAL TVMRPDASLQVDTVVPNATVSEKAQFLDCSIVSRS
SQDSRF AVAWYSLRTKAGGKRSSPGLLEE QEEEEEEEEEDDDDDPTERTALL SVGPDAVFGPEGSPW
EGRLRFQRLSPVLYRLTVLQASPQDTGNYSCHVEEWLPSPQKEWYRLTEESAPIGIRVLDTSPTLQSI
CSNDALFYVFFYPFPIFGILIIITILLVRFKSRNSSKNSDGGKNGVPLLWIKEPHLYNSPTCLEPPVLSIH
PGAID

TRTRPLEQKLISEEDLAANDILDYKDDDDKV

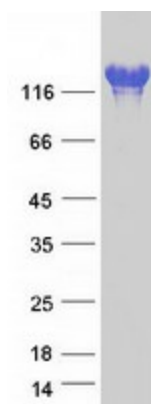
Tag:	C-Myc/DDK
Purity:	> 80% as determined by SDS-PAGE and Coomassie blue staining
Concentration:	>0.05 µg/µL as determined by microplate BCA method
Labeling Method:	Labeled with [U- ¹³ C ₆ , ¹⁵ N ₄]-L-Arginine and [U- ¹³ C ₆ , ¹⁵ N ₂]-L-Lysine



[View online »](#)

Buffer:	25 mM Tris-HCl, 100 mM glycine, pH 7.3
Storage:	Store at -80°C. Avoid repeated freeze-thaw cycles.
Stability:	Stable for 3 months from receipt of products under proper storage and handling conditions.
RefSeq:	NP_001007238
RefSeq Size:	7284
RefSeq ORF:	3585
Synonyms:	EWI-3; LCDD; V8
Locus ID:	3321
UniProt ID:	O75054
Cytogenetics:	1p13.1
Summary:	The protein encoded by this gene is an immunoglobulin-like membrane protein containing several V-type Ig-like domains. A mutation in this gene has been associated with bilateral nasolacrimal duct obstruction (LCDD). [provided by RefSeq, Jun 2016]
Protein Families:	Transmembrane

Product images:



Coomassie blue staining of purified IGSF3 protein (Cat# [TP321769]). The protein was produced from HEK293T cells transfected with IGSF3 cDNA clone (Cat# [RC221769]) using MegaTran 2.0 (Cat# [TT210002]).