

Product datasheet for PH321745

Pancreatic Lipase Related Protein 2 (PNLIPRP2) (NM_005396) Human Mass Spec Standard

Product data:

Product Type:	Mass Spec Standards
Description:	PNLIPRP2 MS Standard C13 and N15-labeled recombinant protein (NP_005387)
Species:	Human
Expression Host:	HEK293
Expression cDNA Clone or AA Sequence:	RC221745
Predicted MW:	51.9 kDa
Protein Sequence:	>RC221745 representing NM_005396 Red=Cloning site Green=Tags(s)

MMLPPWTLGLLLLLATVRGKEVCYQGLGCFSDKWPAGTLQRPVKLLPWSPEDIDTRFLLYTNENPNNFQL
ITGTEPDTIEASNFQLDRKTRFIIHGFLDKAEDSWPSDMCKMFEVEKVNICVDWRHGSAMYTQAVQN
IRVYGAETAFLIQALSTQLGYSLEDVHVIGHSLGAHTAAEAGRRLGGRVGRITGLDPAGPCFQDEPEEVR
LDPSDAVFDVIHTDSSPIVPSLFGMSQKVGHLDFPNGGKEMPCKKNVLSTITDIDGIWEGIGGFVS
CNHLRSFEYYSSVLPDGFGLGPCASYDEFQESKCFPCPAEGCCKMGHYADQFKGKTSAVEQTFFLNTG
ESGNFTSWRYKVSVTLGKKEVNGYIRIALYGSNENSKQYEIFKGLKPDASHTCAIDVDFNVGKIQKVK
FLWNKRGINLSEPKLGASQITVQSGEDGTEYNFCSSDTVEENVLQSLYPC

TRTRPLEQKLISEEDLAANDILDYKDDDDKV

Tag:	C-Myc/DDK
Purity:	> 80% as determined by SDS-PAGE and Coomassie blue staining
Concentration:	>0.05 µg/µL as determined by microplate BCA method
Labeling Method:	Labeled with [U- ¹³ C ₆ , ¹⁵ N ₄]-L-Arginine and [U- ¹³ C ₆ , ¹⁵ N ₂]-L-Lysine
Buffer:	25 mM Tris-HCl, 100 mM glycine, pH 7.3
Storage:	Store at -80°C. Avoid repeated freeze-thaw cycles.
Stability:	Stable for 3 months from receipt of products under proper storage and handling conditions.
RefSeq:	<u>NP_005387</u>
RefSeq Size:	1486
RefSeq ORF:	1410
Synonyms:	PLRP2



[View online »](#)

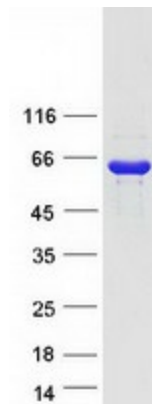
Locus ID: 5408
UniProt ID: [P54317](#)
Cytogenetics: 10q25.3

Summary: This gene encodes a lipase that hydrolyzes galactolipids, the main components of plant membrane lipids. An allelic polymorphism in this gene results in both coding and non-coding variants; the reference genome represents the non-coding allele. [provided by RefSeq, Aug 2015]

Protein Families: Druggable Genome, Secreted Protein

Protein Pathways: Glycerolipid metabolism, Metabolic pathways

Product images:



Coomassie blue staining of purified PNLIPRP2 protein (Cat# [TP321745]). The protein was produced from HEK293T cells transfected with PNLIPRP2 cDNA clone (Cat# [RC221745]) using MegaTran 2.0 (Cat# [TT210002]).