

## Product datasheet for PH321721

### SPRR2E (NM\_001024209) Human Mass Spec Standard

#### Product data:

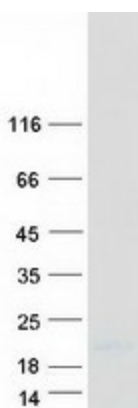
Product Type:	Mass Spec Standards
Description:	SPRR2E MS Standard C13 and N15-labeled recombinant protein (NP_001019380)
Species:	Human
Expression Host:	HEK293
Expression cDNA Clone or AA Sequence:	RC221721
Predicted MW:	7.7 kDa
Protein Sequence:	>RC221721 representing NM_001024209 <b>Red</b> =Cloning site <b>Green</b> =Tags(s)  MSYQQQCKQPCQPPPVCPTPKCPEPCPPPKCPEPCPPPKCPQPCPPQQCQKCPPVTPSPPCQPKCPPK SK  <b>TR</b> TRPLEQKLISEEDLAANDILDYKDDDDKV
Tag:	C-Myc/DDK
Purity:	> 80% as determined by SDS-PAGE and Coomassie blue staining
Concentration:	>0.05 µg/µL as determined by microplate BCA method
Labeling Method:	Labeled with [U- 13C6, 15N4]-L-Arginine and [U- 13C6, 15N2]-L-Lysine
Buffer:	25 mM Tris-HCl, 100 mM glycine, pH 7.3
Storage:	Store at -80°C. Avoid repeated freeze-thaw cycles.
Stability:	Stable for 3 months from receipt of products under proper storage and handling conditions.
RefSeq:	<a href="#">NP_001019380</a>
RefSeq Size:	762
RefSeq ORF:	216
Locus ID:	6704
UniProt ID:	<a href="#">P22531</a>
Cytogenetics:	1q21.3



[View online »](#)

**Summary:**

This gene encodes a member of a family of small proline-rich proteins clustered in the epidermal differentiation complex on chromosome 1q21. The encoded protein, along with other family members, is a component of the cornified cell envelope that forms beneath the plasma membrane in terminally differentiated stratified squamous epithelia. This envelope serves as a barrier against extracellular and environmental factors. The seven SPRR2 genes (A-G) appear to have been homogenized by gene conversion compared to others in the cluster that exhibit greater differences in protein structure. [provided by RefSeq, Feb 2014]

**Product images:**

Coomassie blue staining of purified SPRR2E protein (Cat# [TP321721]). The protein was produced from HEK293T cells transfected with SPRR2E cDNA clone (Cat# [RC221721]) using MegaTran 2.0 (Cat# [TT210002]).