

Product datasheet for PH321684

OVGP1 (NM_002557) Human Mass Spec Standard

Product data:

Product Type:	Mass Spec Standards
Description:	OVGP1 MS Standard C13 and N15-labeled recombinant protein (NP_002548)
Species:	Human
Expression Host:	HEK293
Expression cDNA Clone or AA Sequence:	RC221684
Predicted MW:	75.4 kDa
Protein Sequence:	>RC221684 protein sequence Red=Cloning site Green=Tags(s)

MWKL LLVWGLV LVLKHH DGAHKLVCYFTNWAHSRPGPASILPHDLDPFLC THLIFAFASMNNNQIVAKD
LQDEKILYPEFNK LKERNRELK TLLSIGWNFGT SRFTTMLSTFANREKFIASV I SLLRTHDFDGLDLFF
LYPGLRGS PMHDRWTF LFLIEELLFAFRKEALLTMRPRLLLSAAVSGVPHIVQTSYDVRFLGRLLDFINV
LSYDLHG SWERFTGHNSPLFSLPEDPKSSAYAMNYWRKLGAPSEKLIMGIPTYGRTFRLLKASKNGLQAR
AIGPASPGKYTKQEGFLAYFEICSFVWGAKKHWDYQYVPYANKGKEWVGVDNAISFSYKAWFIRREHFG
GAMVWTLDMDDVRGTF CGTGPFFLVYV LNDILVRAEFSS TSLPQFWLSSAVNSSSDPERLAVTTAWTTD
SKILPPGGEAGVTEIHGKCENMTITPRGTTVPTKETVSLGKHTVALGEKTEITGAMTMTSVGHQSMTPG
EKALTPVGHQSVTTGQKTLTSVGYQSVTPGEKTLTPVGHQSVTPVSHQSVSPGGTTMTPVHFQTETLRQN
TVAPRRKAVAREKVTVP SRNISVTPEGQTMPLRGENLTSEVGTHPRMGNLGLQME AENRMLSSSPVIQL
PEQTPLAFDNRFPVIYGNHSSVNSVTPQTSP LSLKKEIPENSAVDEEA

TRTRPLEQKLI SEEDLAANDILDYKDDDDKV

Tag:	C-Myc/DDK
Purity:	> 80% as determined by SDS-PAGE and Coomassie blue staining
Concentration:	>0.05 µg/µL as determined by microplate BCA method
Labeling Method:	Labeled with [U- ¹³ C ₆ , ¹⁵ N ₄]-L-Arginine and [U- ¹³ C ₆ , ¹⁵ N ₂]-L-Lysine
Buffer:	25 mM Tris-HCl, 100 mM glycine, pH 7.3
Storage:	Store at -80°C. Avoid repeated freeze-thaw cycles.
Stability:	Stable for 3 months from receipt of products under proper storage and handling conditions.
RefSeq:	NP_002548
RefSeq Size:	2258



[View online »](#)

RefSeq ORF: 2034

Synonyms: CHIT5; EGP; MUC9; OGP

Locus ID: 5016

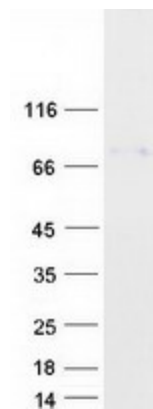
UniProt ID: [Q12889](#), [Q86YN0](#)

Cytogenetics: 1p13.2

Summary: This gene encodes a large, carbohydrate-rich, epithelial glycoprotein with numerous O-glycosylation sites located within threonine, serine, and proline-rich tandem repeats. The gene is similar to members of the mucin and the glycosyl hydrolase 18 gene families. Regulation of expression may be estrogen-dependent. Gene expression and protein secretion occur during late follicular development through early cleavage-stage embryonic development. The protein is secreted from non-ciliated oviductal epithelial cells and associates with ovulated oocytes, blastomeres, and spermatozoan acrosomal regions. [provided by RefSeq, Jul 2008]

Protein Families: Secreted Protein

Product images:



Coomassie blue staining of purified OVGP1 protein (Cat# [TP321684]). The protein was produced from HEK293T cells transfected with OVGP1 cDNA clone (Cat# [RC221684]) using MegaTran 2.0 (Cat# [TT210002]).